

vila
merak®



IDEJNO ARHITEKTONSKO - URBANISTIČKO RJEŠENJE
STAMBENIH OBJEKATA U ZONI DUP-A PRŽNO - KAMENOV II
ZA DIO KAMENOV - VRIJESNO

OBJEKAT: Villa Torrente Superiore

PROJEKTNA ORGANIZACIJA : STUDIO **GRAD** doo
www.studiograd.net

Podgorica, jun 2011.



LOKALITET: KAMENOV II

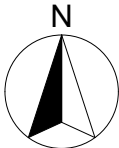


AVIO SNIMAK SA DISPOZICIJOM OBJEKATA

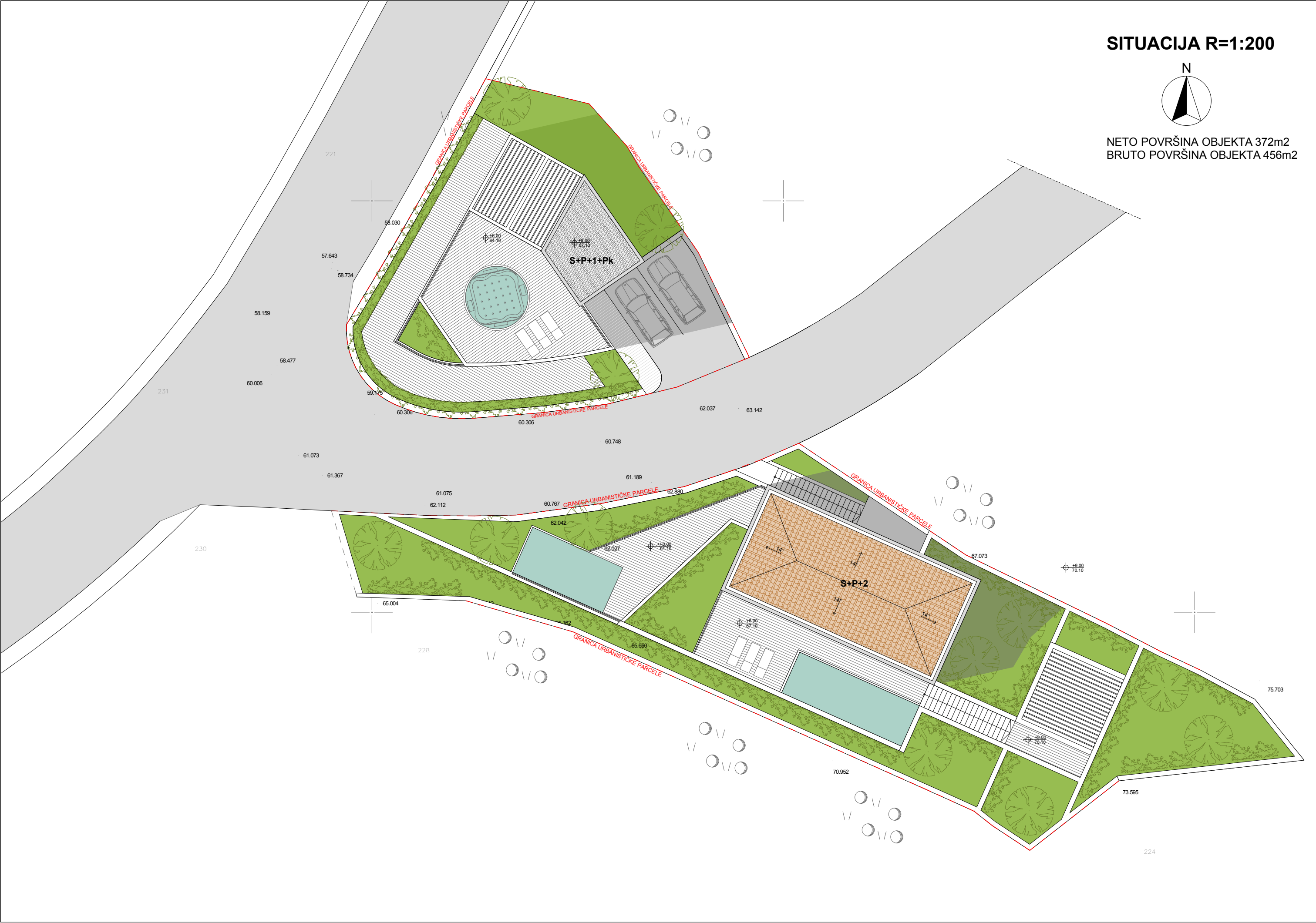


VILLA TORRENTE SUPERIORE I VILLA TORRENTE

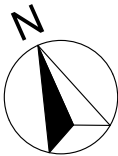
SITUACIJA R=1:200



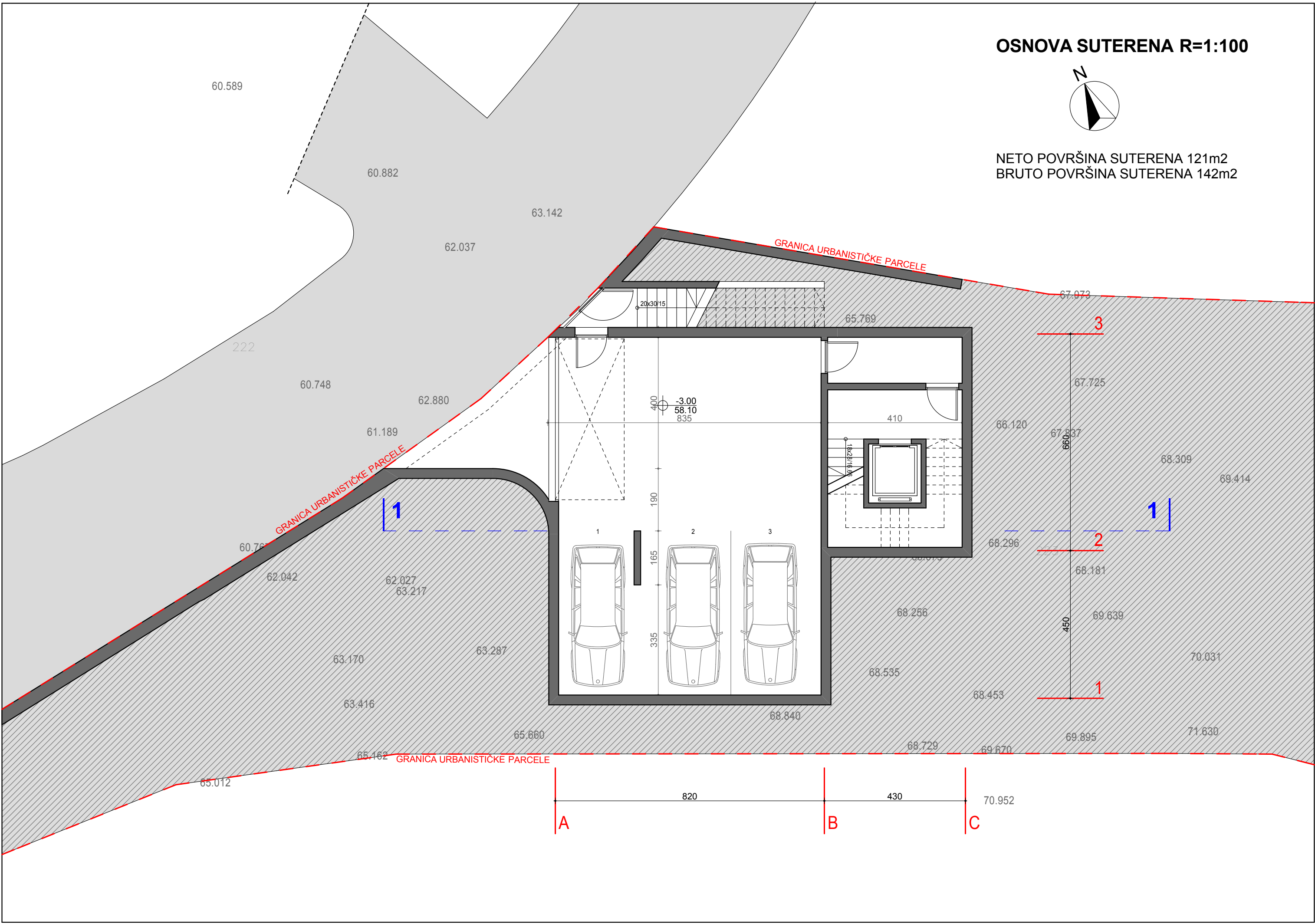
NETO POVRŠINA OBJEKTA 372m2
BRUTO POVRŠINA OBJEKTA 456m2



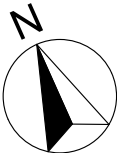
OSNOVA SUTERENA R=1:100



NETO POVRŠINA SUTERENA 121m2
BRUTO POVRŠINA SUTERENA 142m2



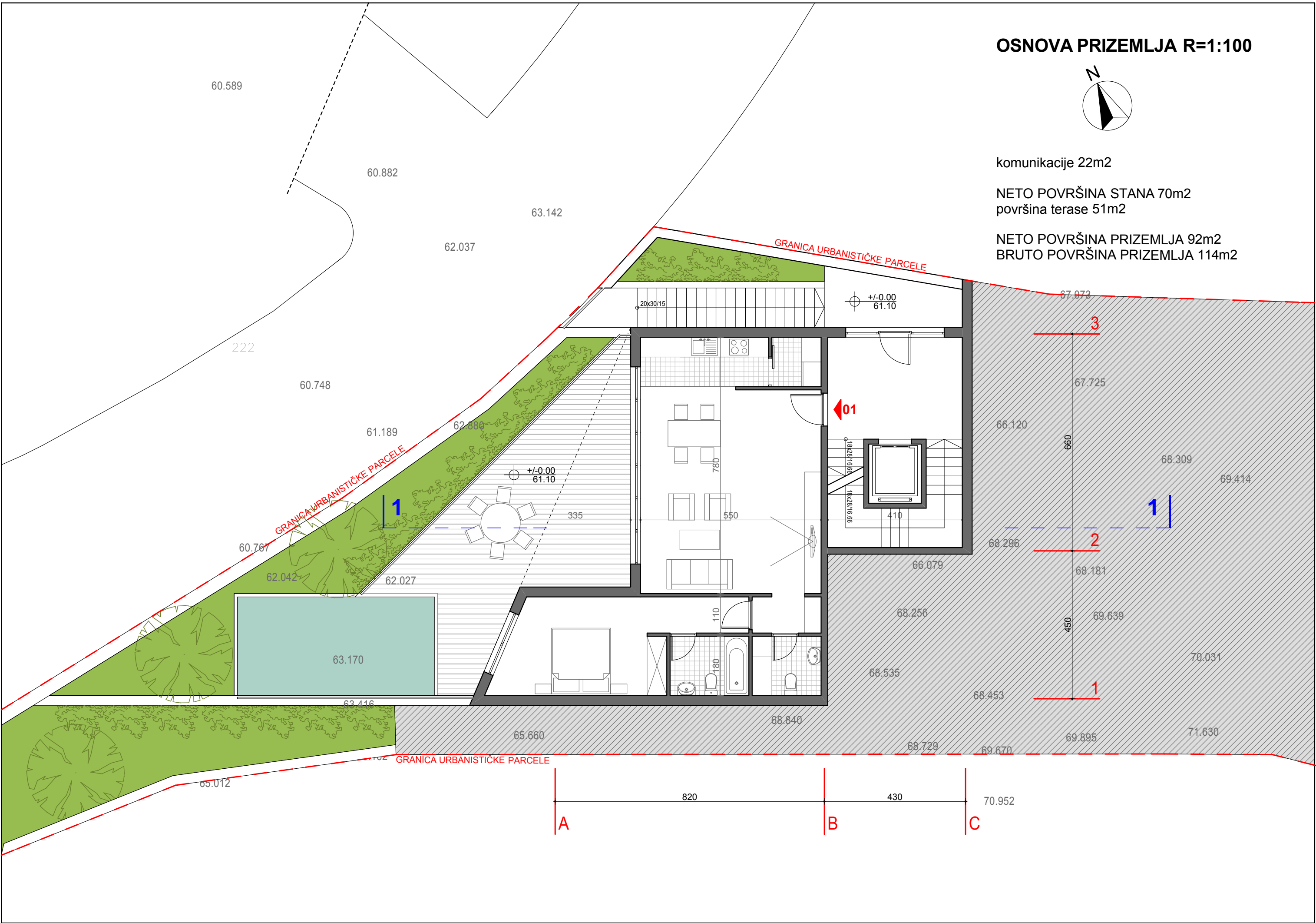
OSNOVA PRIZEMLJA R=1:100



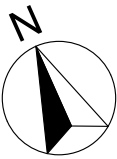
komunikacije 22m2

NETO POVRŠINA STANA 70m2
površina terase 51m2

NETO POVRŠINA PRIZEMLJA 92m2
BRUTO POVRŠINA PRIZEMLJA 114m2

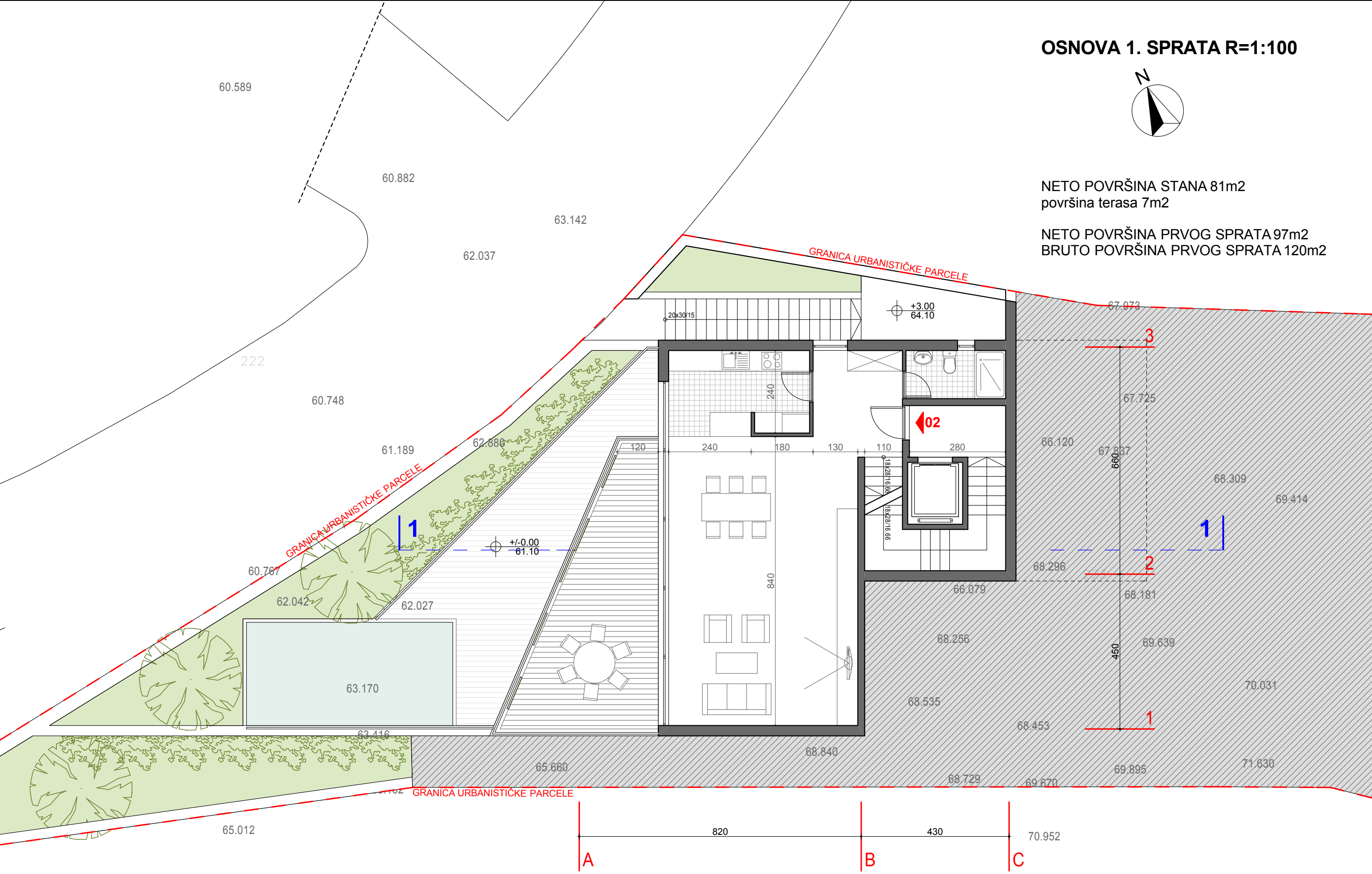


OSNOVA 1. SPRATA R=1:100

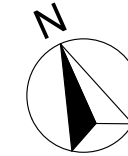


NETO POVRŠINA STANA 81m2
površina terasa 7m2

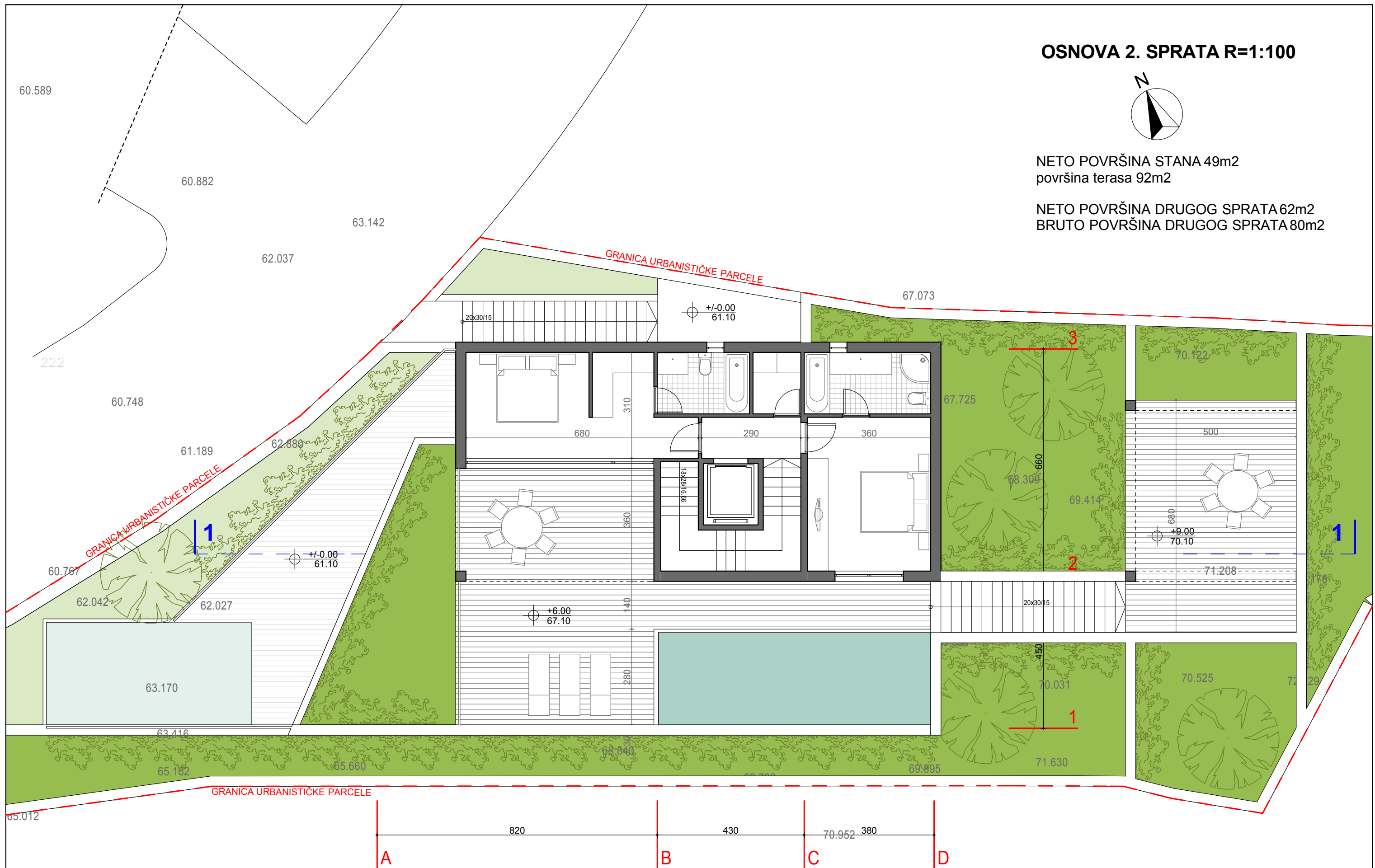
NETO POVRŠINA PRVOG SPRATA 97m2
BRUTO POVRŠINA PRVOG SPRATA 120m2



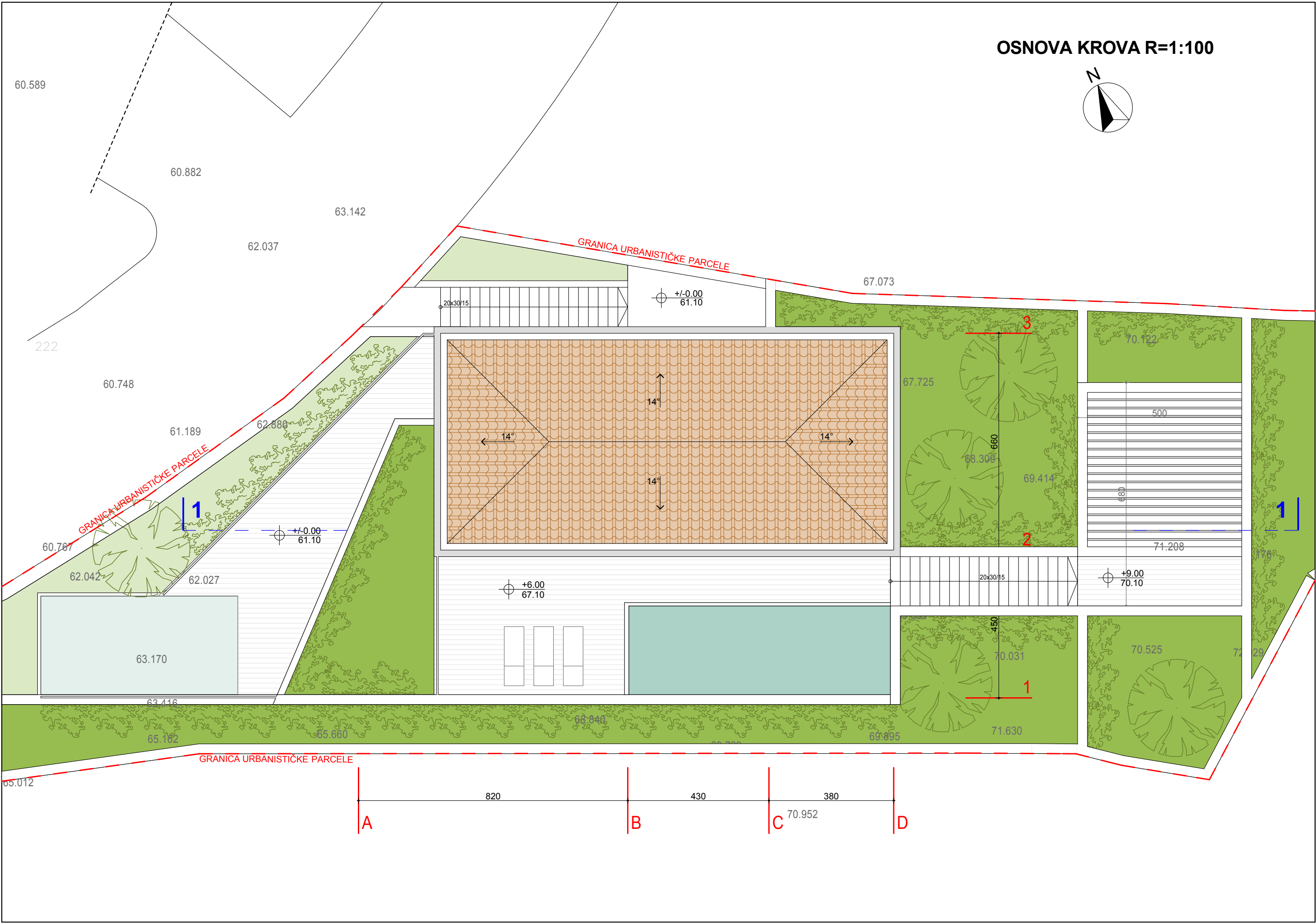
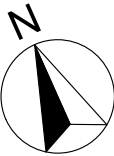
NETO POVRŠINA STANA 49m2
površina terasa 92m2



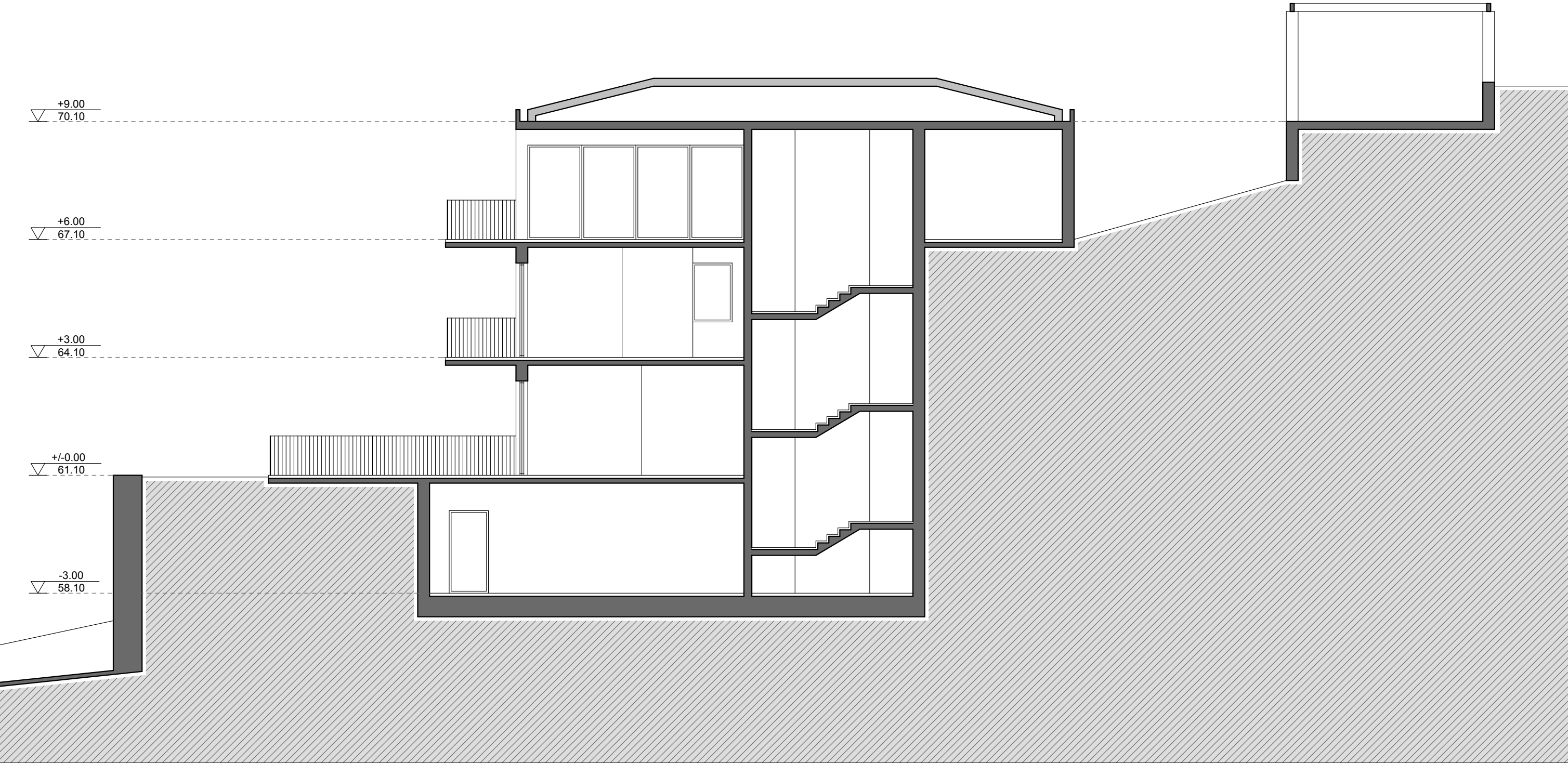
NETO POVRŠINA DRUGOG SPRATA 62m²
BRUTO POVRŠINA DRUGOG SPRATA 80m²



OSNOVA KROVA R=1:100



PRESJEK 1-1 R=1:100



STAN 01

1	dnevni boravak/ trpezarija	36,15m ²
2	kuhinja	5,85m ²
3	ostava	2,25m ²
4	spavaća soba	18,15m ²
5	kupatilo	4,30m ²
6	toalet	2,70m ²

NETO korisna površina **69,40m²**

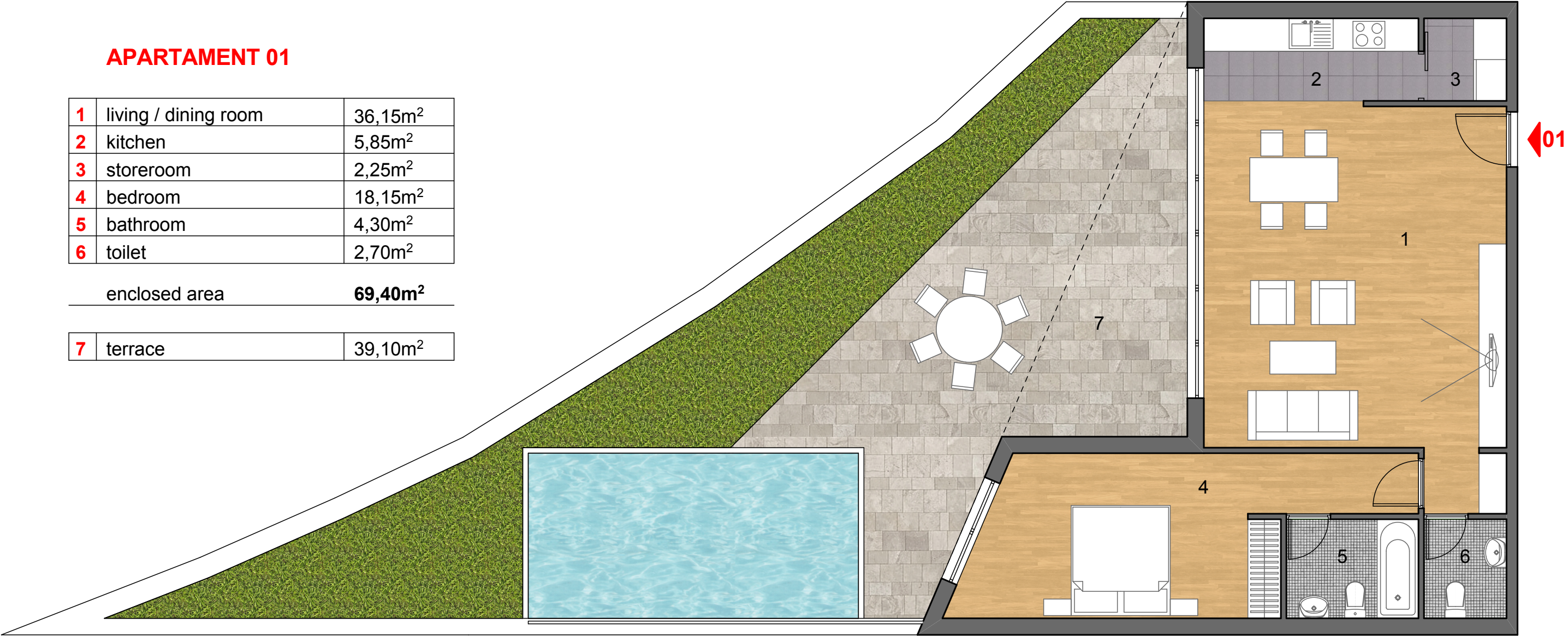
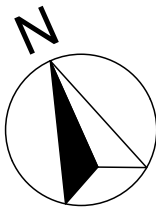
7	terasa	39,10m ²
---	--------	---------------------

APARTAMENT 01

1	living / dining room	36,15m ²
2	kitchen	5,85m ²
3	storeroom	2,25m ²
4	bedroom	18,15m ²
5	bathroom	4,30m ²
6	toilet	2,70m ²

enclosed area **69,40m²**

7	terrace	39,10m ²
---	---------	---------------------



STAN 02 nivo 1

1	ulazni hol	8,05m ²
2	dnevni boravak/ trpezarija	46,20m ²
3	toalet	4,05m ²
4	kuhinja	10,00m ²
5	stepenište	9,55m ²

NETO korisna površina 77,85m²

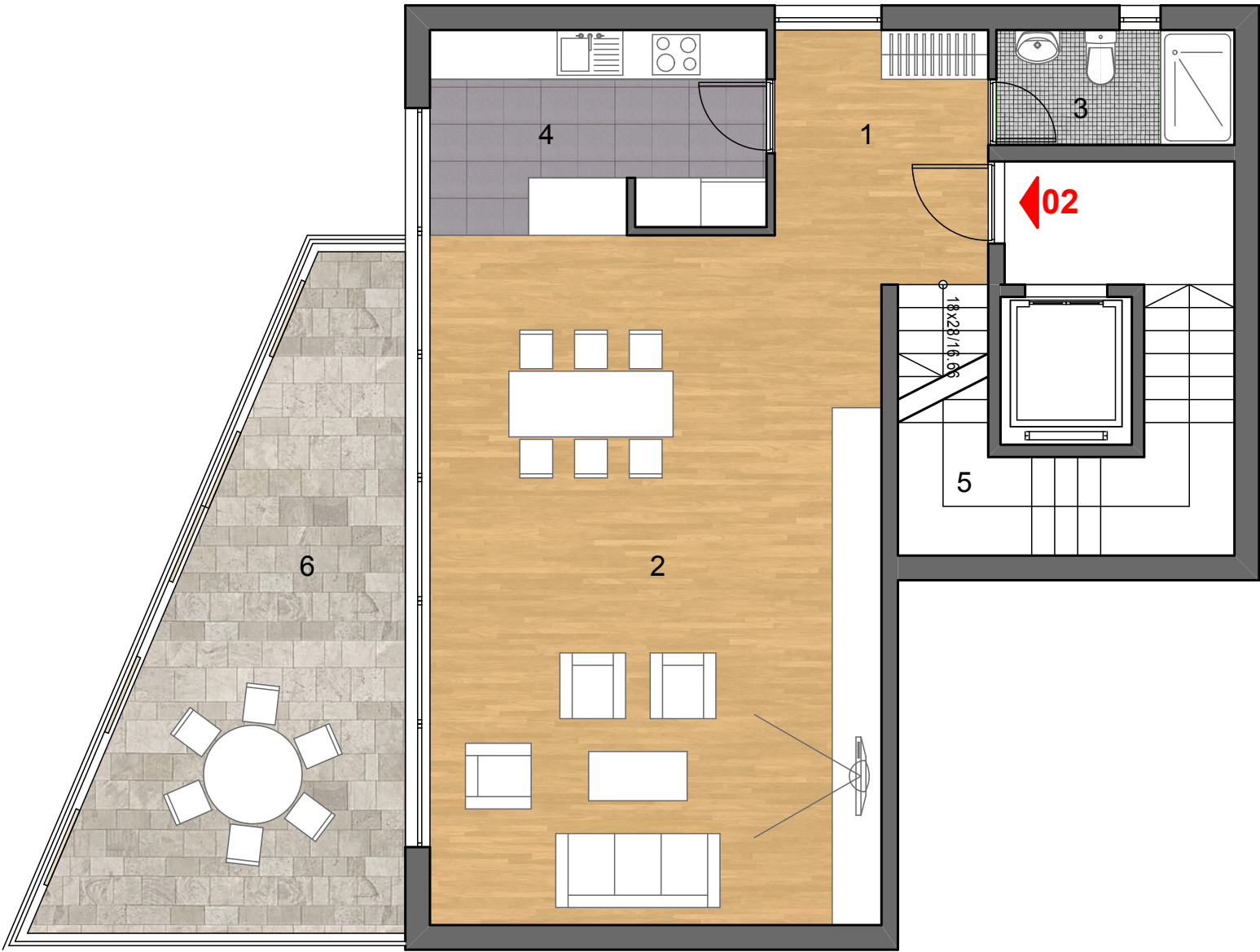
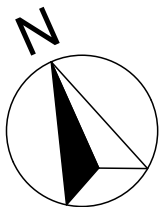
6	terasa	23,50m ²
---	--------	---------------------

APARTAMENT 02 level 1

1	entrance hall	8,05m ²
2	living / dining room	46,20m ²
3	toilet	4,05m ²
4	kitchen	10,00m ²
5	stairs	9,55m ²

enclosed area 77,85m²

6	terrace	23,50m ²
---	---------	---------------------



STAN 02 nivo 2

1	hodnik	3,50m ²
2	spavaća soba	18,40m ²
3	kupatilo	4,85m ²
4	vešernica	2,50m ²

5	spavaća soba	16,20m ²
6	kupatilo	6,65m ²

NETO korisna površina 52,10m²

7	terasa	90,90m ²
---	--------	---------------------

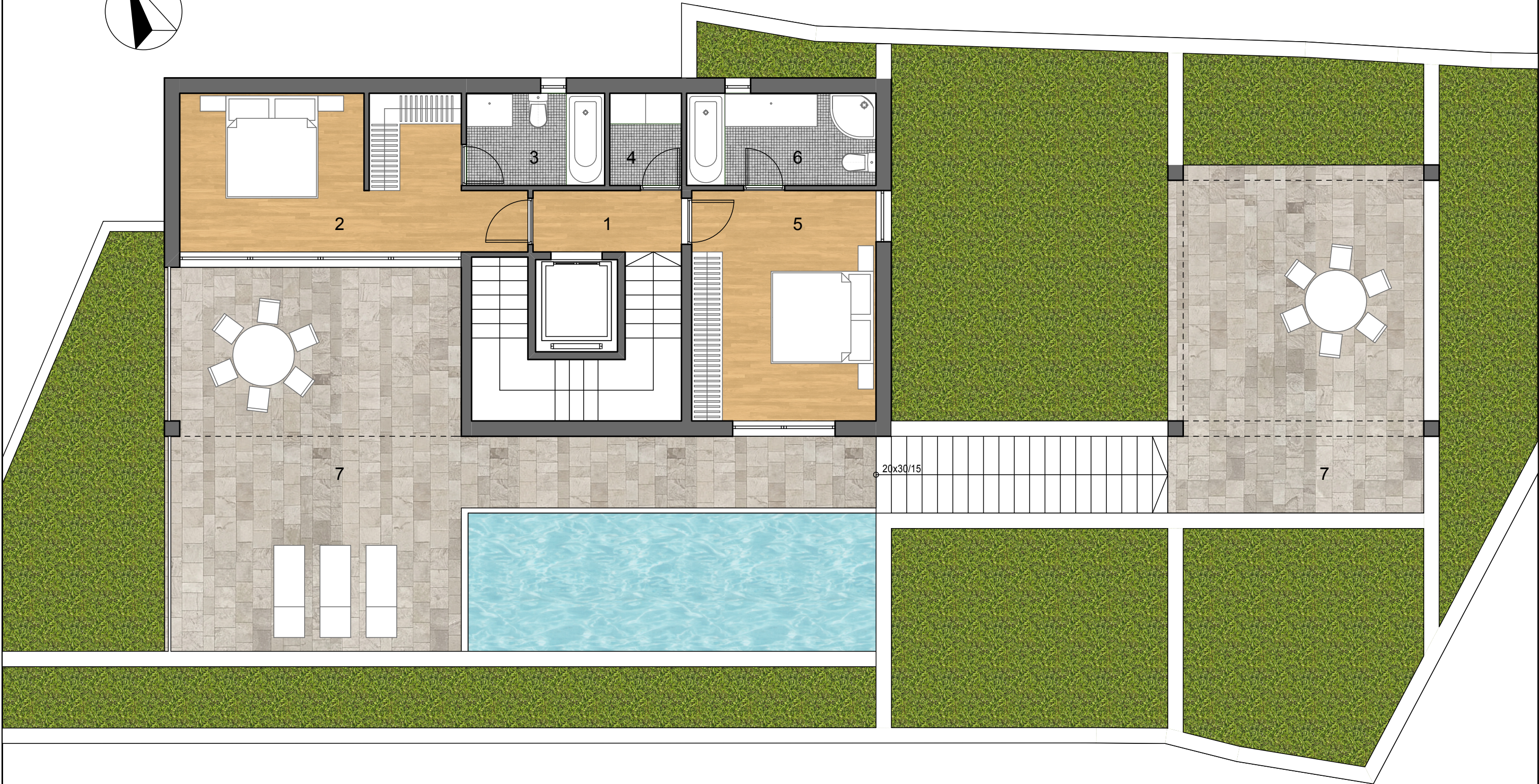
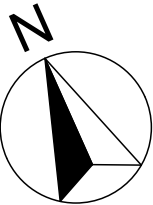
APARTAMENT 02 level 2

1	hallway	3,50m ²
2	bedroom	18,40m ²
3	bathroom	4,85m ²
4	laundry room	2,50m ²

5	bedroom	16,20m ²
6	bathroom	6,65m ²

enclosed area 52,10m²

7	terrace	90,90m ²
---	---------	---------------------





BOČNI IZGLED OBJEKTA VILLA TORENTE SUPERIORE



FRONTALNI IZGLED OBJEKTA TORENTE SUPERIORE



VILLA TORENTE SUPERIORE



VILLA TORRENTE SUPERIORE I VILLA TORRENTE



VILLA TORENTE SUPERIORE