

vila  
merak®



IDEJNO ARHITEKTONSKO - URBANISTIČKO RJEŠENJE  
STAMBENIH OBJEKATA U ZONI DUP-A PRŽNO - KAMENOV II  
ZA DIO KAMENOV - VRIJESNO

## OBJEKAT: Villa Torrente

PROJEKTNNA ORGANIZACIJA : STUDIO **GRAD** doo  
[www.studiograd.net](http://www.studiograd.net)

Podgorica, jun 2011.





LOKALITET: KAMENOV II





AVIO SNIMAK SA DISPOZICIJOM OBJEKATA

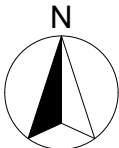




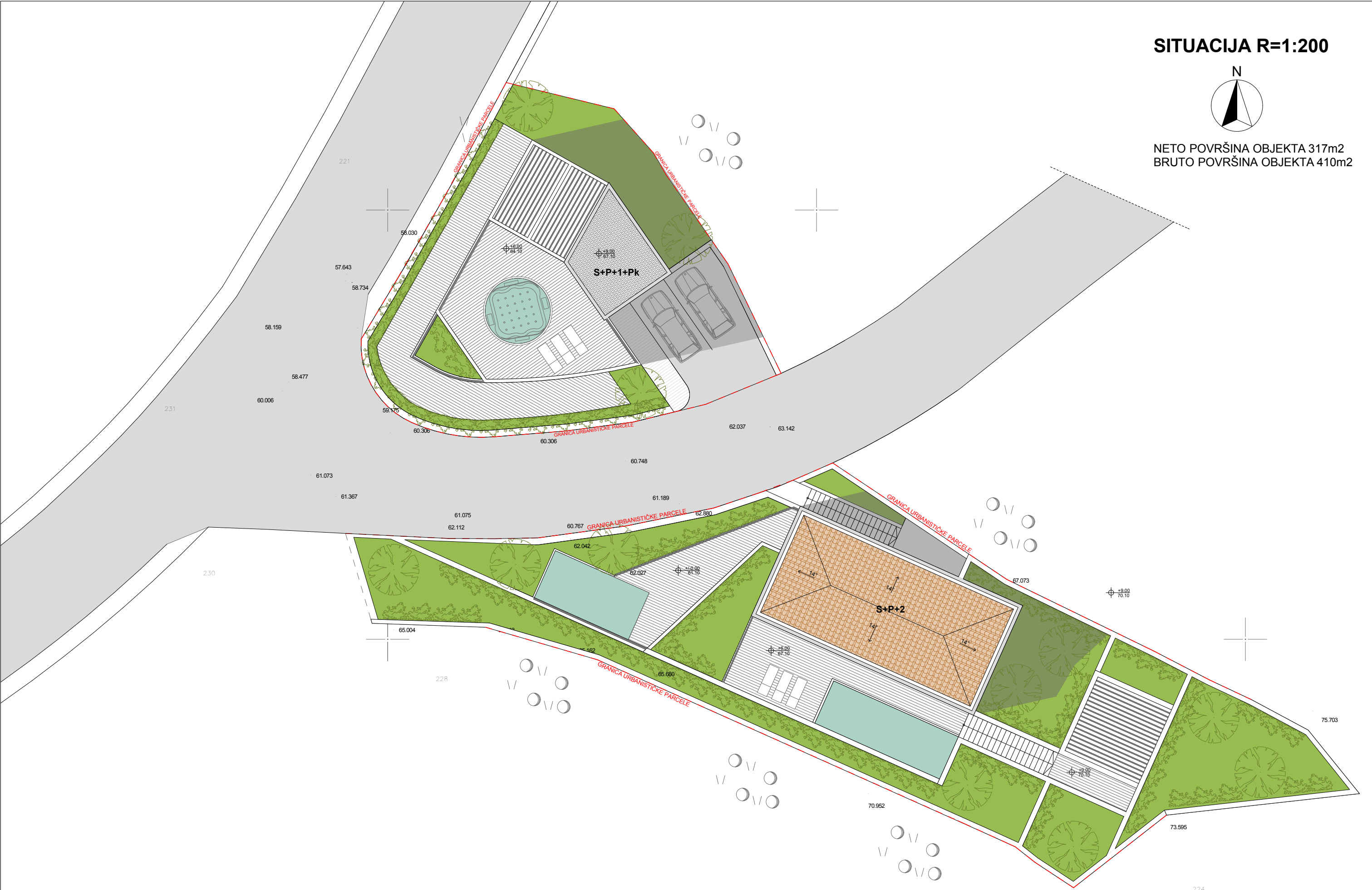
VILLA TORRENTE I VILLA TORRENTE SUPERIORE



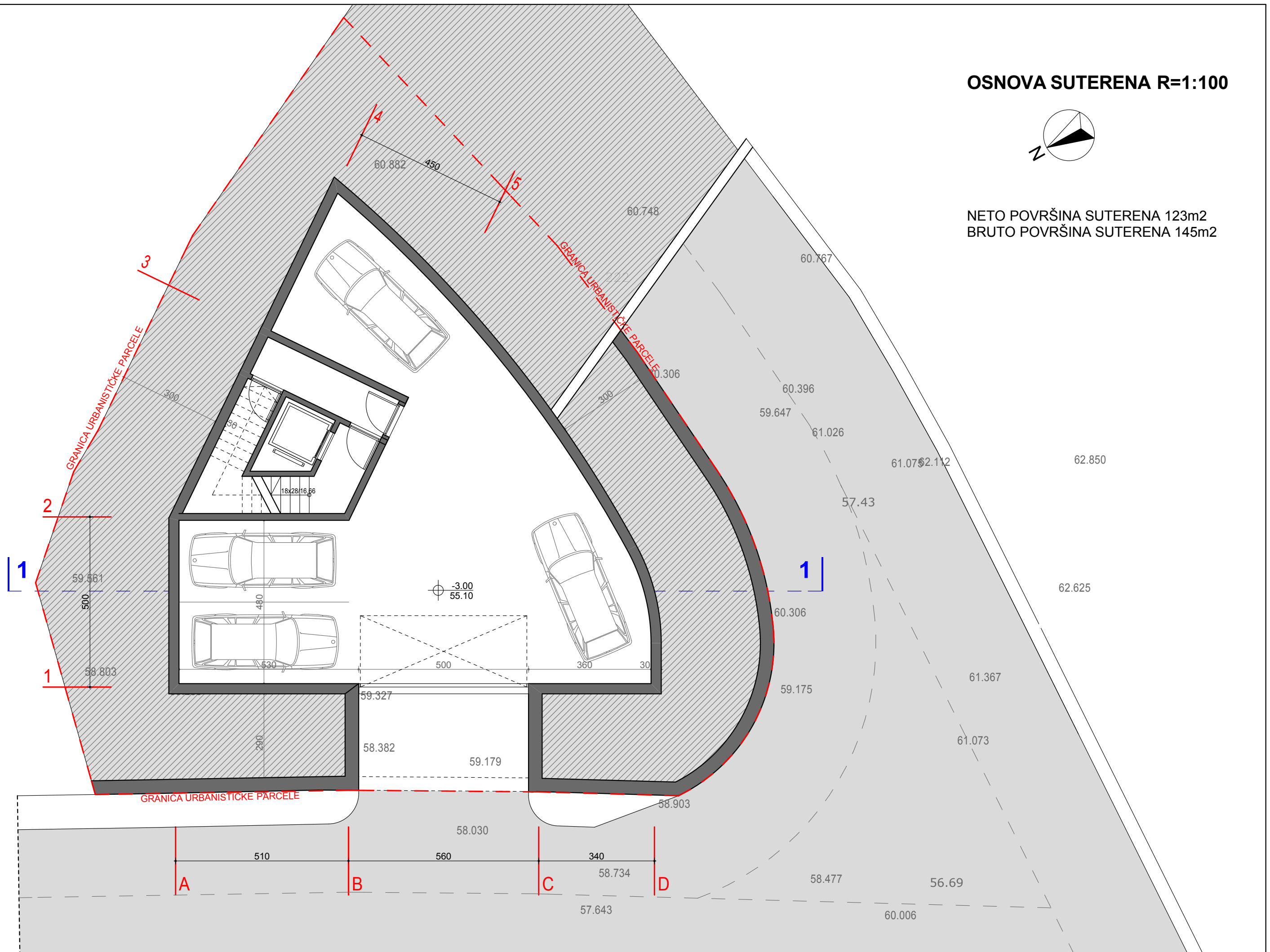
SITUACIJA R=1:200



NETO POVRŠINA OBJEKTA 317m2  
BRUTO POVRŠINA OBJEKTA 410m2

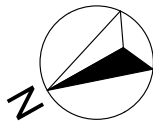








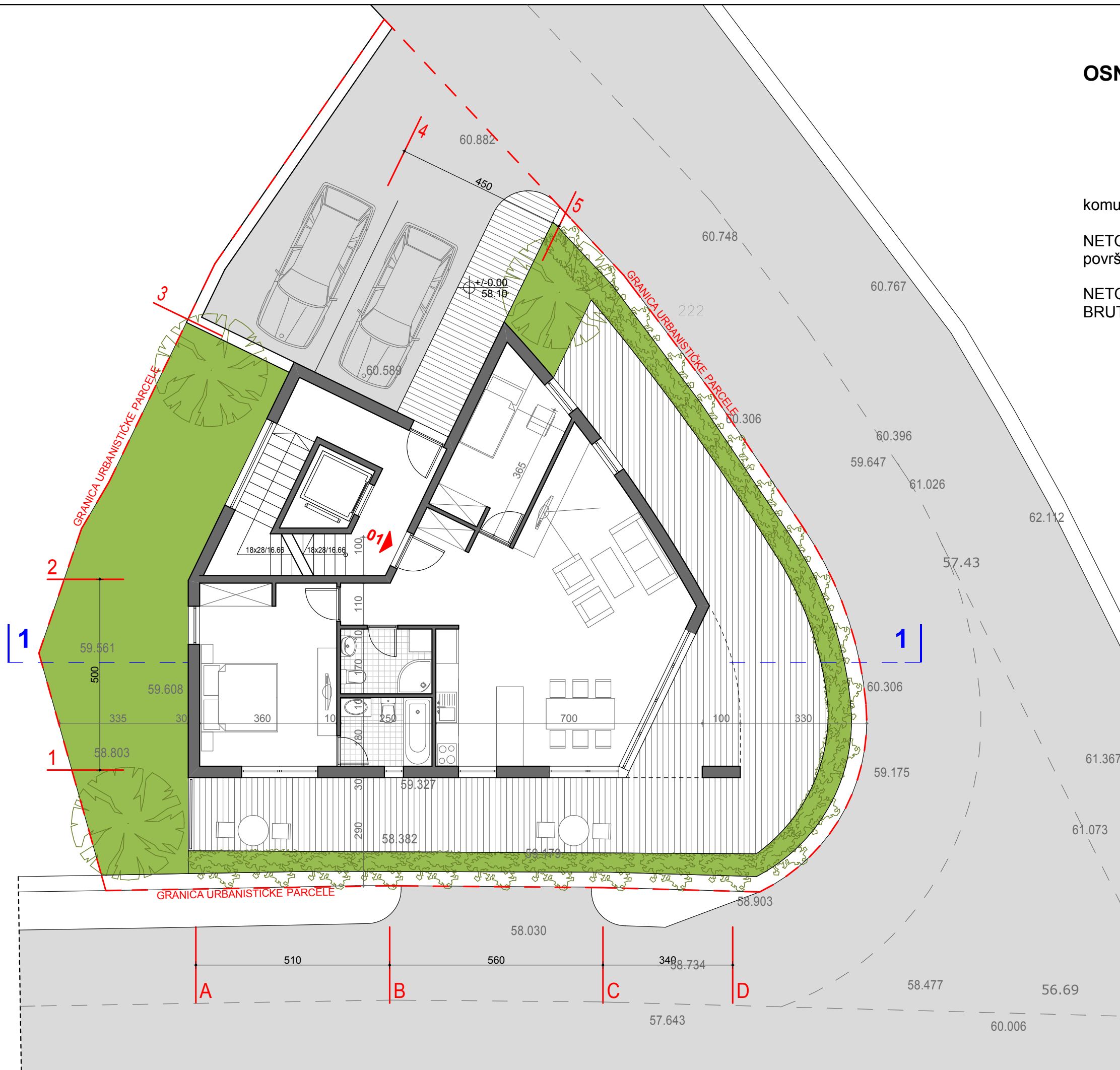
OSNOVA PRIZEMLJA R=1:100



komunikacije 16m2

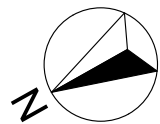
NETO POVRŠINA STANA 81m2  
površina terasa 15m2

NETO POVRŠINA PRIZEMLJA 97m2  
BRUTO POVRŠINA PRIZEMLJA 120m2





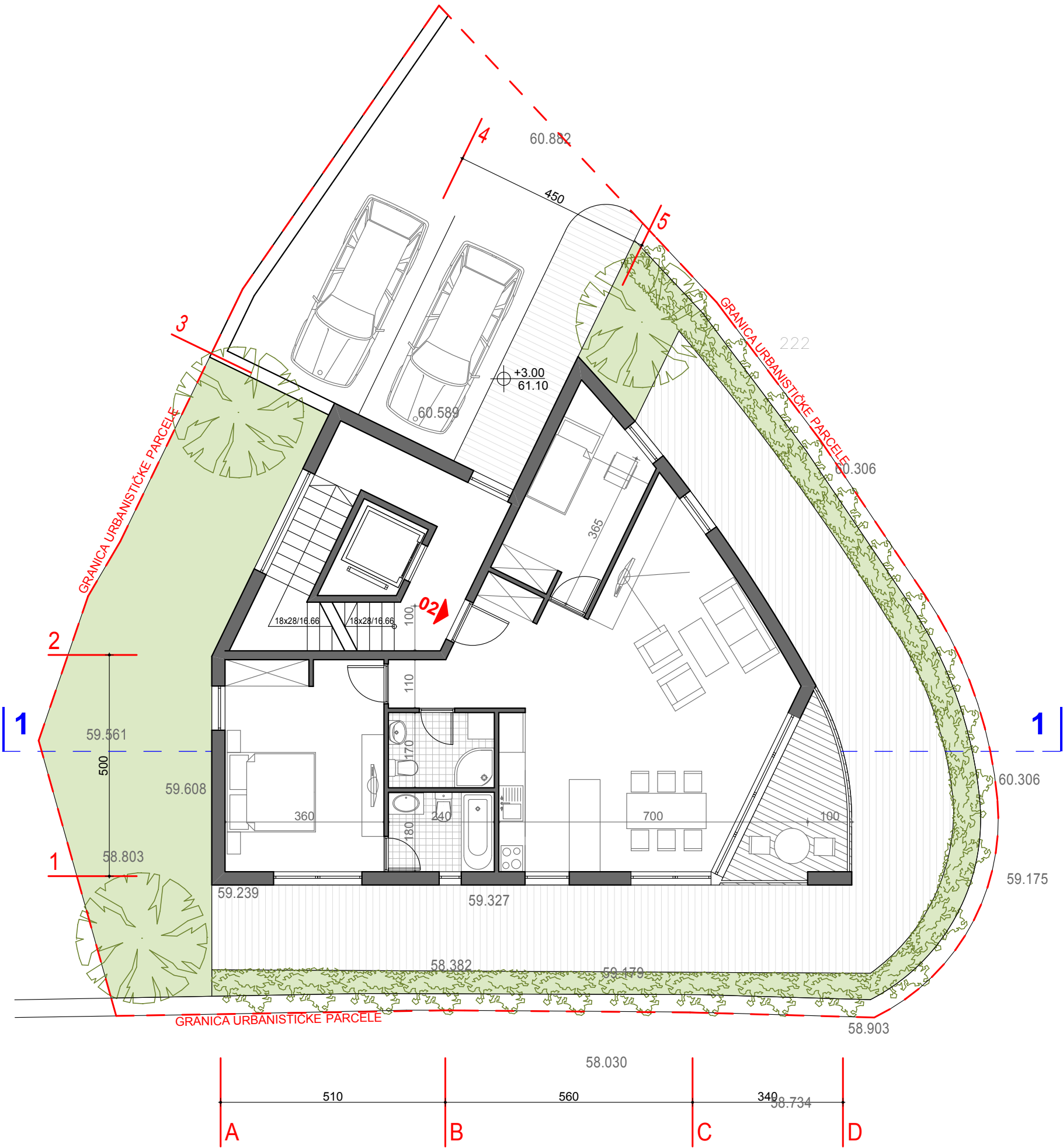
OSNOVA 1. SPRATA R=1:100



komunikacije 16m2

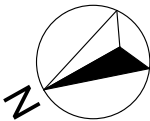
NETO POVRŠINA STANA 81m2  
površina terasa 15m2

NETO POVRŠINA 1. SPRATA 97m2  
BRUTO POVRŠINA 1. SPRATA 120m2



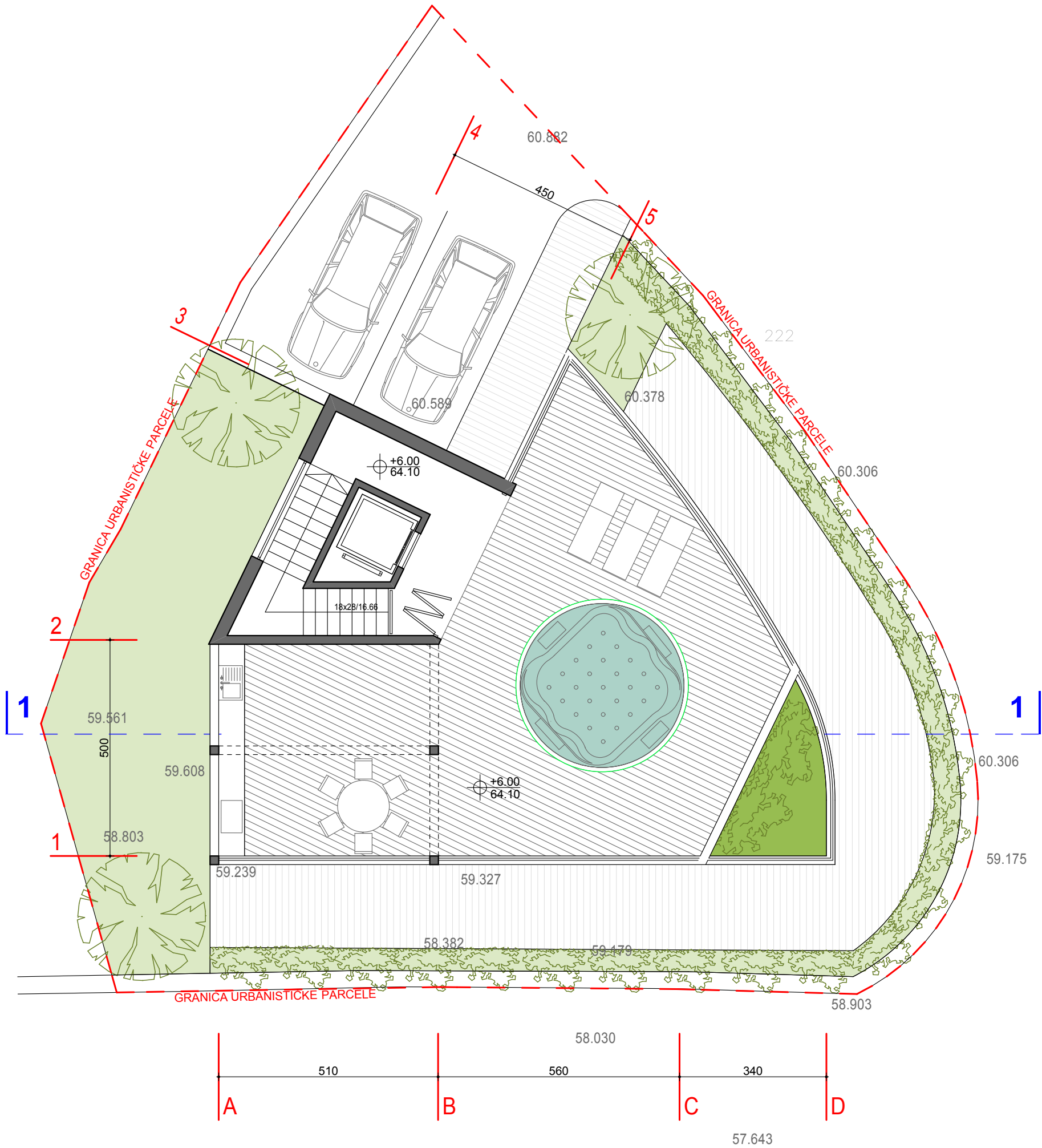


OSNOVA 2. SPRATA R=1:100



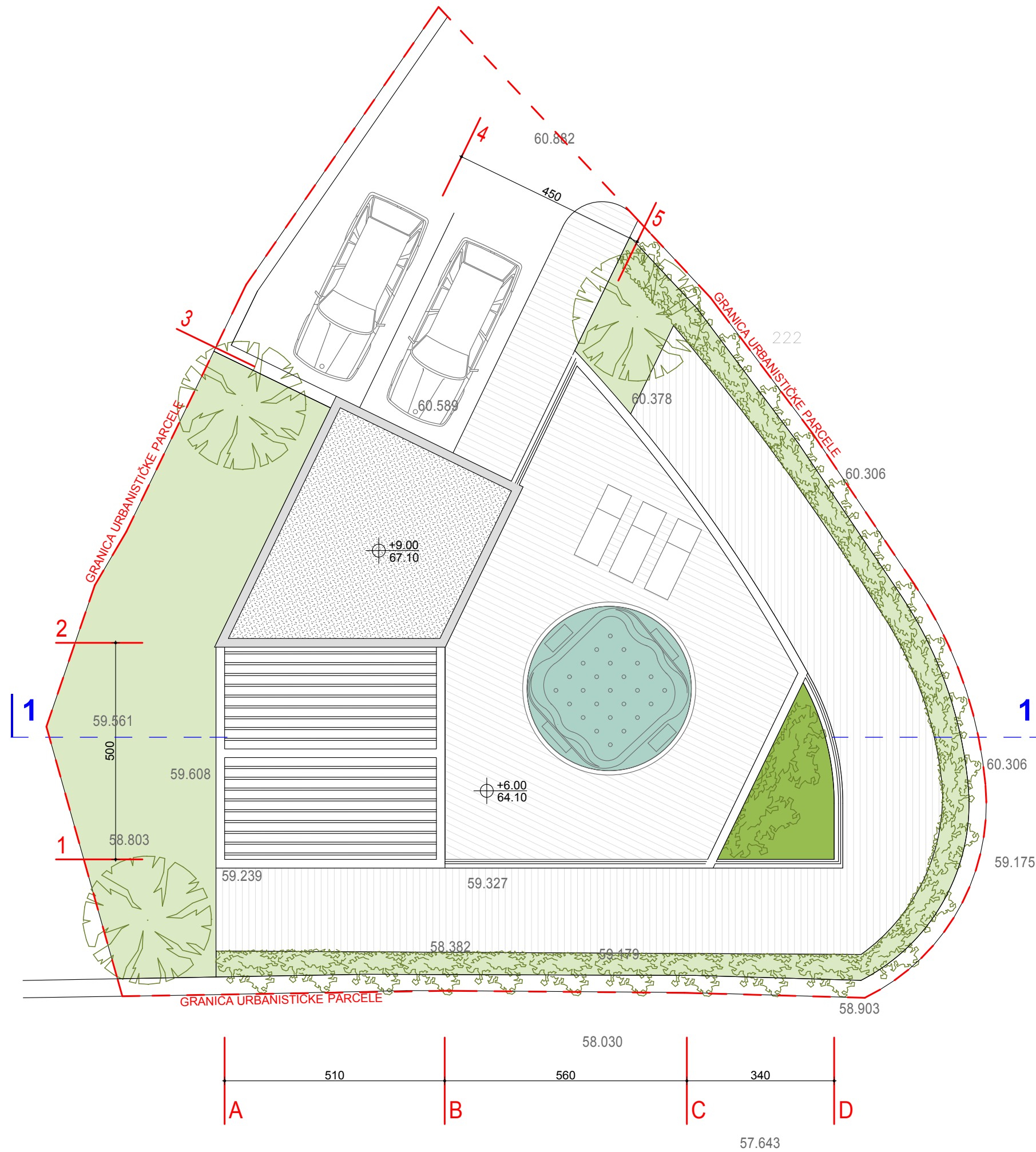
komunikacije 16m2  
površina terase 72m2

BRUTO POVRŠINA POTKROVLJA 25m2



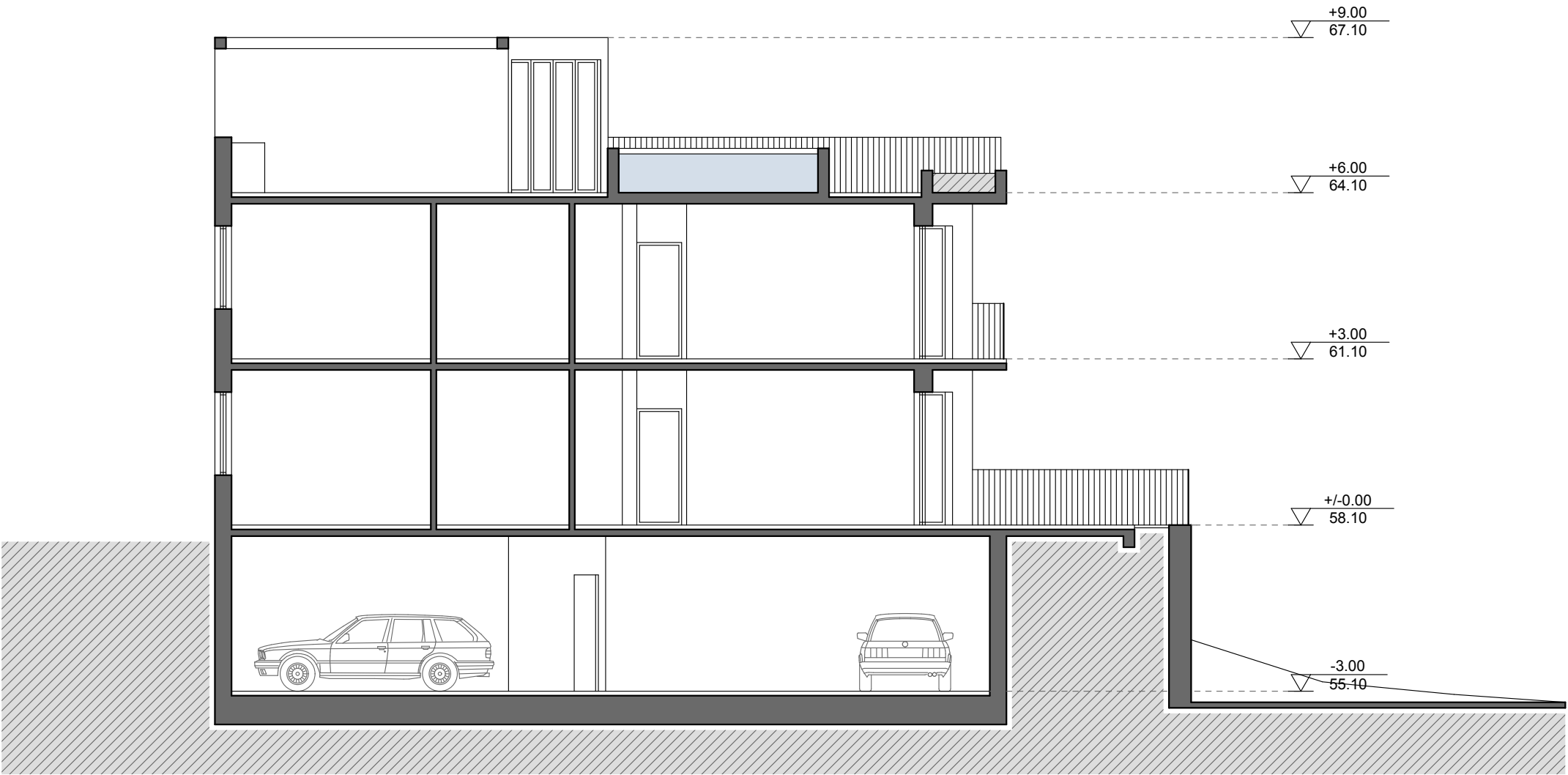


A diagram showing a circle with a shaded sector. A point labeled 'z' is located outside the circle, near the vertex of the sector.





PRESJEK 1-1 R=1:100





STAN 01

1	ulazni hol	9,70m <sup>2</sup>
2	dnevni boravak/ trpezarija	27,85m <sup>2</sup>
3	kuhinja	8,45m <sup>2</sup>
4	spavaća soba	10,00m <sup>2</sup>
5	spavaća soba	17,25m <sup>2</sup>
6	kupatilo	4,30m <sup>2</sup>
7	kupatilo	4,05m <sup>2</sup>

NETO korisna površina      **81,60m<sup>2</sup>**

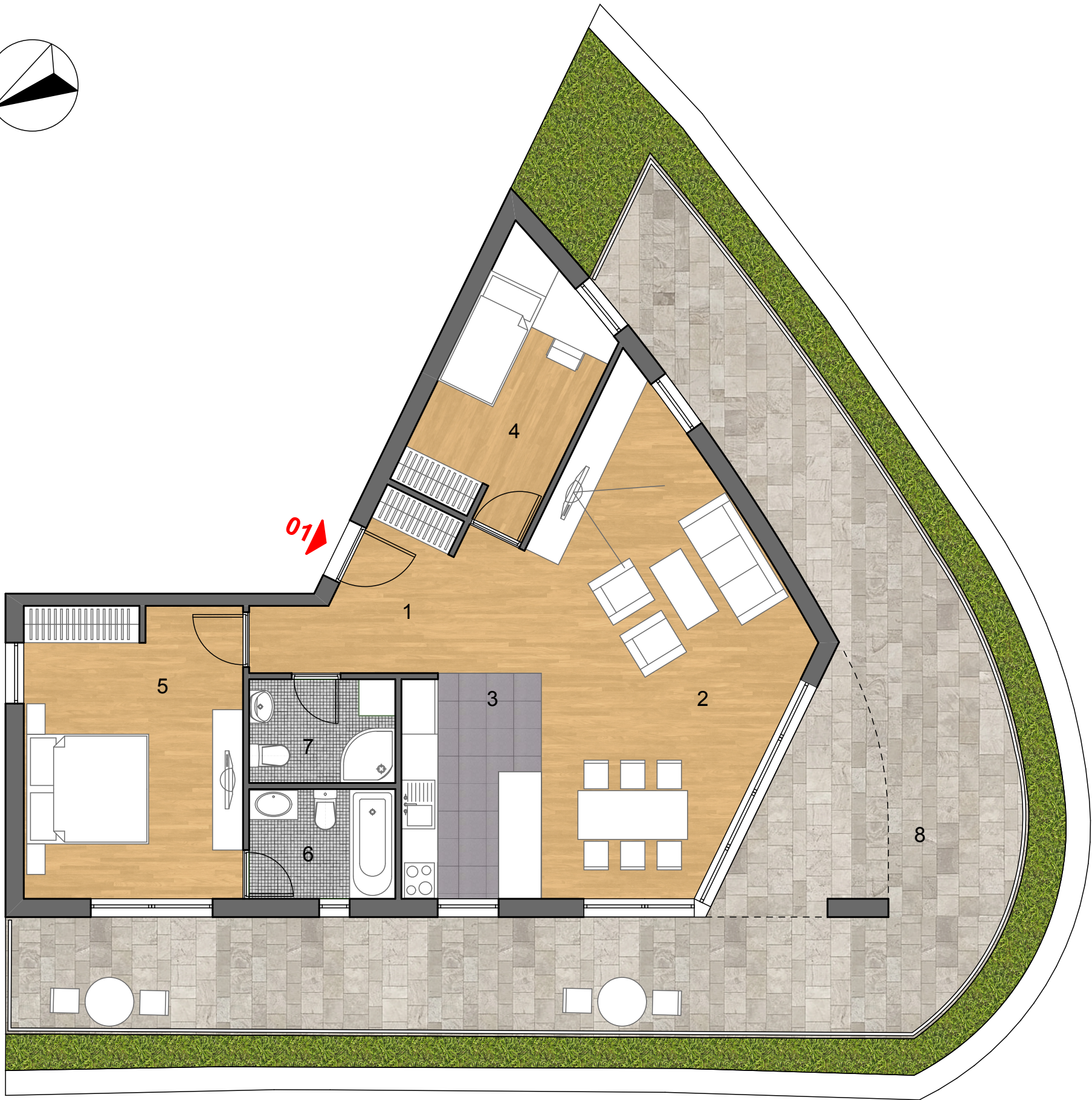
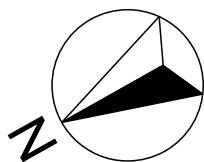
8	terasa	67,05m <sup>2</sup>
---	--------	---------------------

APARTAMENT 01

1	entrance hall	9,70m <sup>2</sup>
2	living / dining room	27,85m <sup>2</sup>
3	kitchen	8,45m <sup>2</sup>
4	bedroom	10,00m <sup>2</sup>
5	bedroom	17,25m <sup>2</sup>
6	bathroom	4,30m <sup>2</sup>
7	bathroom	4,05m <sup>2</sup>

enclosed area      **81,60m<sup>2</sup>**

8	terrace	67,05m <sup>2</sup>
---	---------	---------------------



STAN 02

1	ulazni hol	9,70m <sup>2</sup>
2	dnevni boravak/ trpezarija	27,85m <sup>2</sup>
3	kuhinja	8,45m <sup>2</sup>
4	spavaća soba	10,00m <sup>2</sup>
5	spavaća soba	17,25m <sup>2</sup>
6	kupatilo	4,30m <sup>2</sup>
7	kupatilo	4,05m <sup>2</sup>

NETO korisna površina      **81,60m<sup>2</sup>**

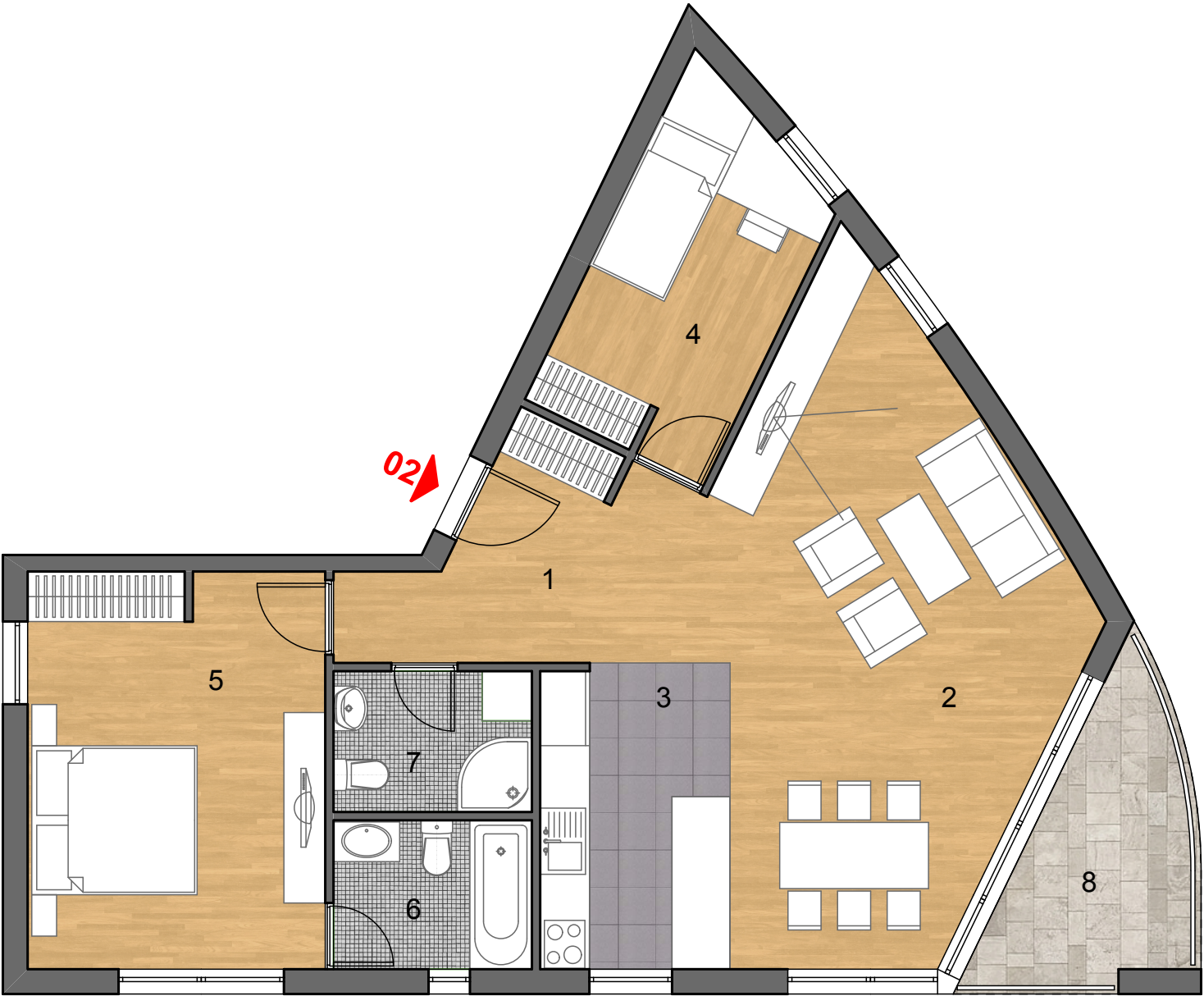
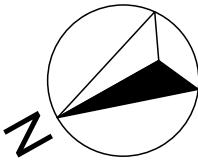
8	terasa	7,80m <sup>2</sup>
---	--------	--------------------

APARTAMENT 02

1	entrance hall	9,70m <sup>2</sup>
2	living / dining room	27,85m <sup>2</sup>
3	kitchen	8,45m <sup>2</sup>
4	bedroom	10,00m <sup>2</sup>
5	bedroom	17,25m <sup>2</sup>
6	bathroom	4,30m <sup>2</sup>
7	bathroom	4,05m <sup>2</sup>

enclosed area      **81,60m<sup>2</sup>**

8	terrace	7,80m <sup>2</sup>
---	---------	--------------------







BOČNI IZGLED OBJEKTA VILLA TORENTE



FRONTALNI IZGLED OBJEKTA VILLA TORENTE





VILLA TORRENTE





VILLA TORRENTE I VILLA TORRENTE SUPERIORE



