

vila
merak®



IDEJNO ARHITEKTONSKO - URBANISTIČKO RJEŠENJE
STAMBENIH OBJEKATA U ZONI DUP-A PRŽNO - KAMENOV II
ZA DIO KAMENOV - VRIJESNO

OBJEKAT: Villa Merak

PROJEKTN A ORGANIZACIJA : STUDIO **GRAD** doo
www.studiograd.net

Podgorica, jun 2011.





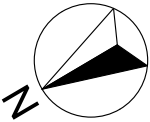
AVIO SNIMAK SA DISPOZICIJOM OBJEKATA



VILLA MERAK

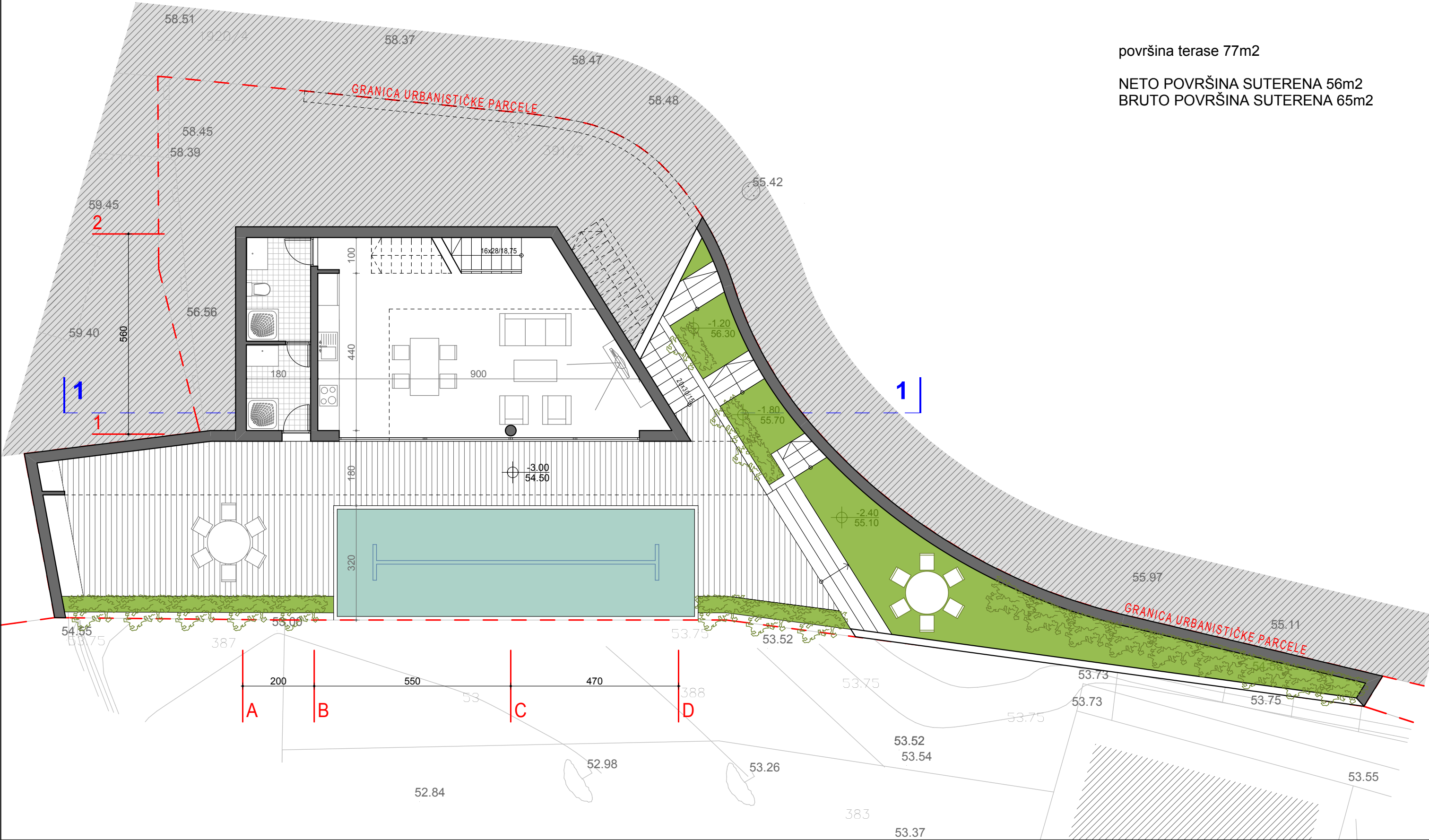
58.92

OSNOVA SUTERENA R=1:100

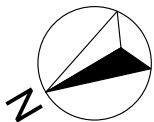


površina terase 77m²

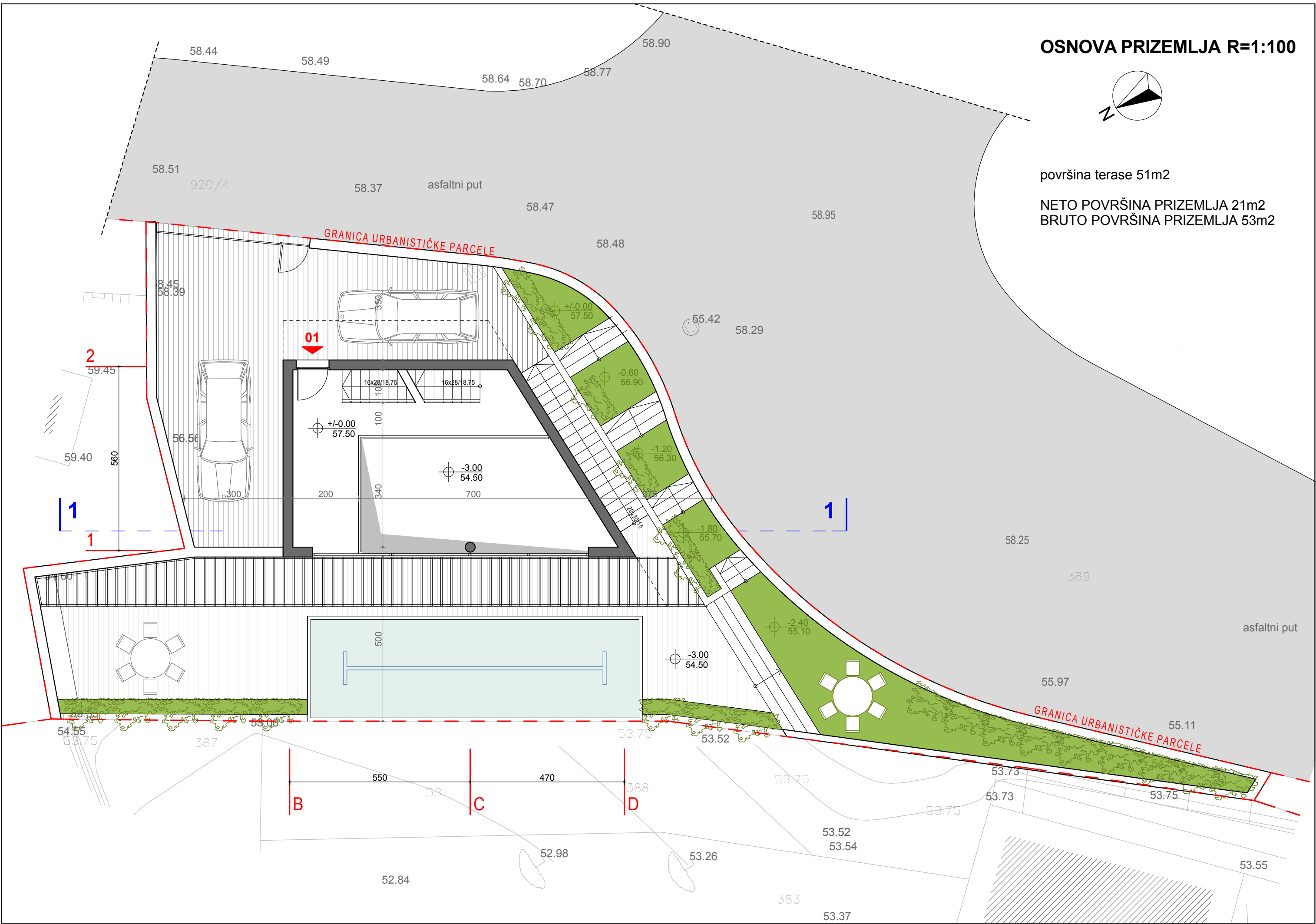
NETO POVRŠINA SUTERENA 56m²
BRUTO POVRŠINA SUTERENA 65m²



OSNOVA PRIZEMLJA R=1:100

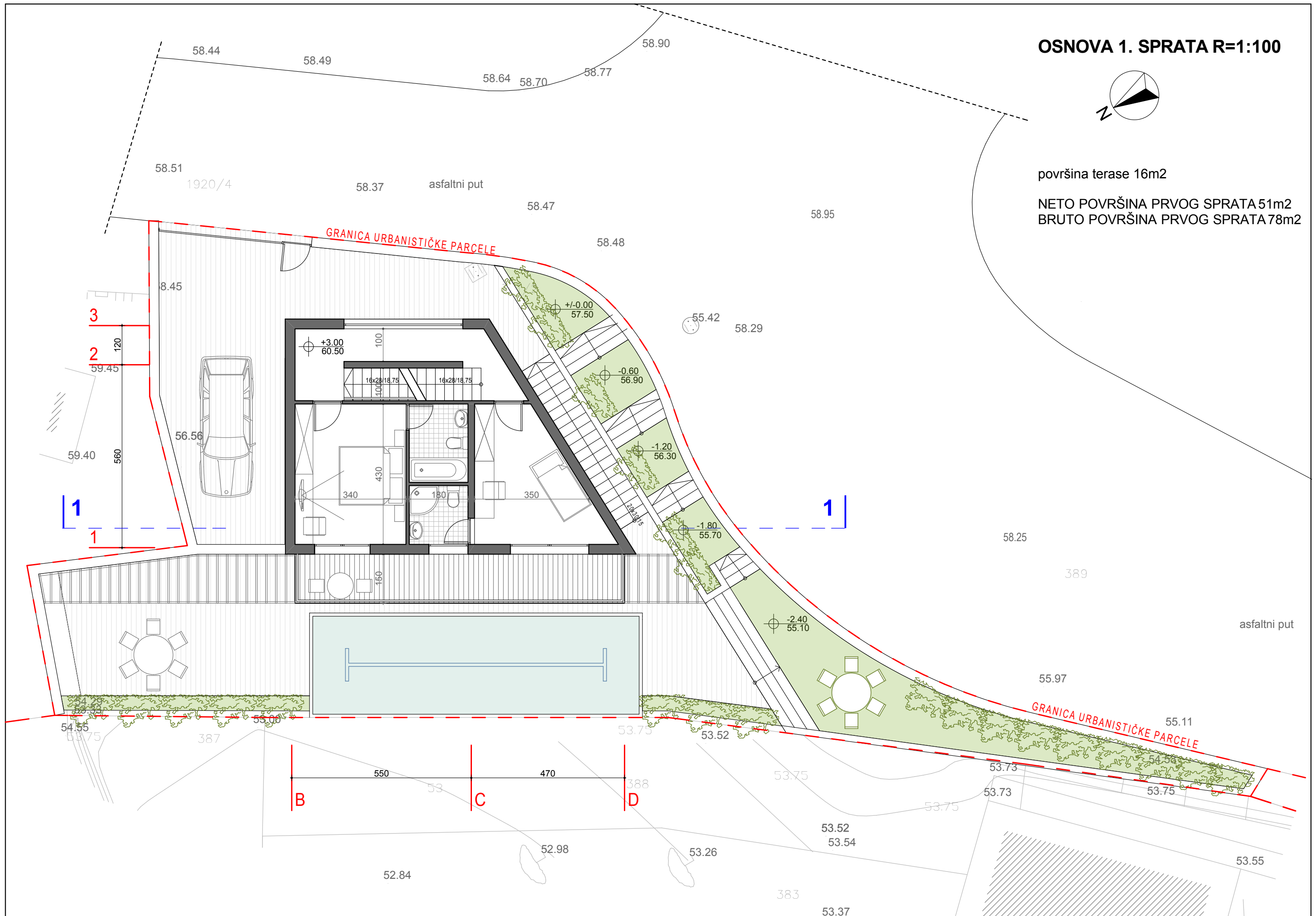


površina terase 51m²
NETO POVRŠINA PRIZEMLJA 21m²
BRUTO POVRŠINA PRIZEMLJA 53m²



A circle with a shaded sector. A handwritten 'Z' is next to the circle.

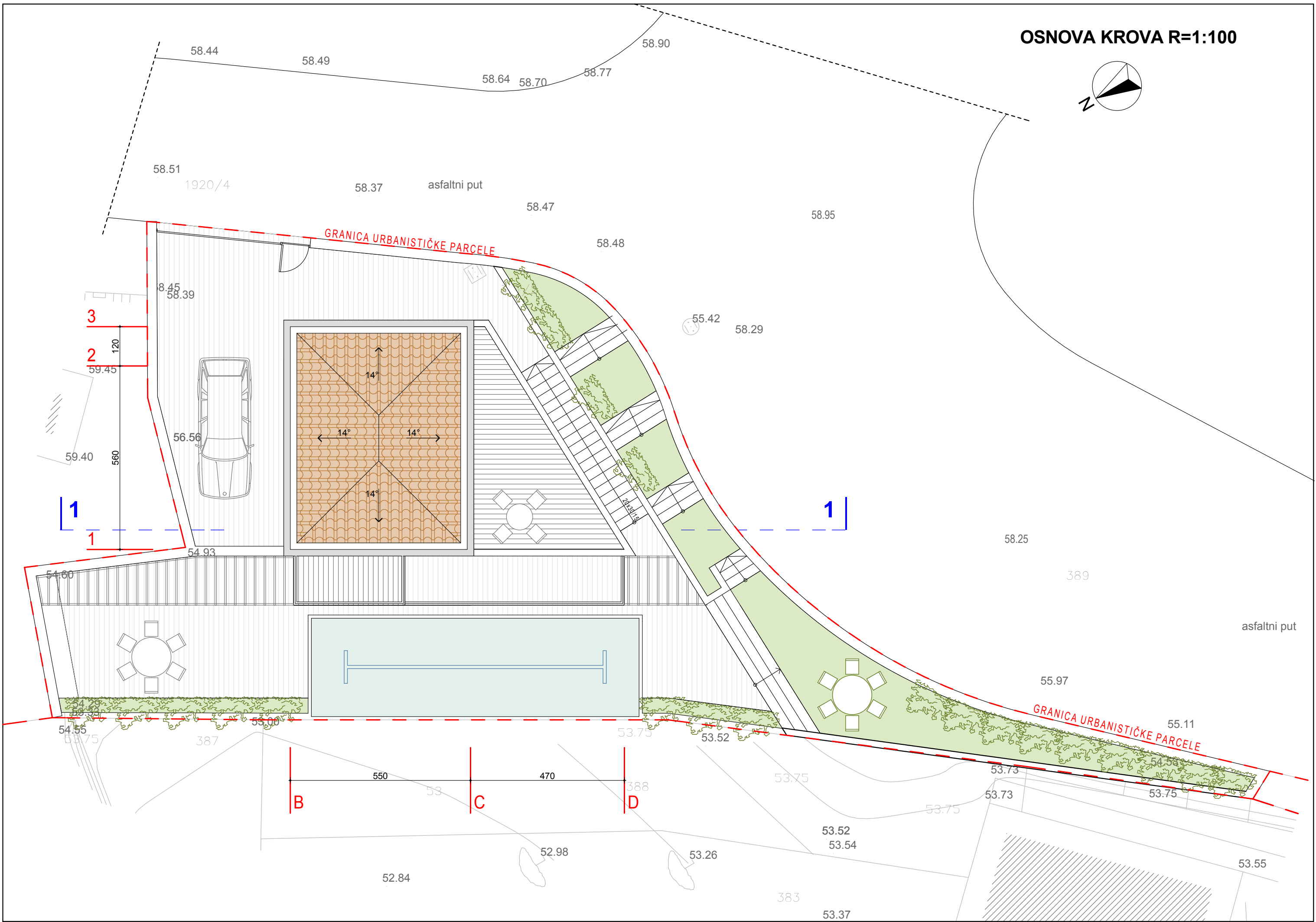
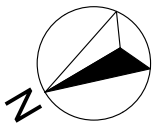
NETO POVRŠINA PRVOG SPRATA 51m²
BRUTO POVRŠINA PRVOG SPRATA 78m²



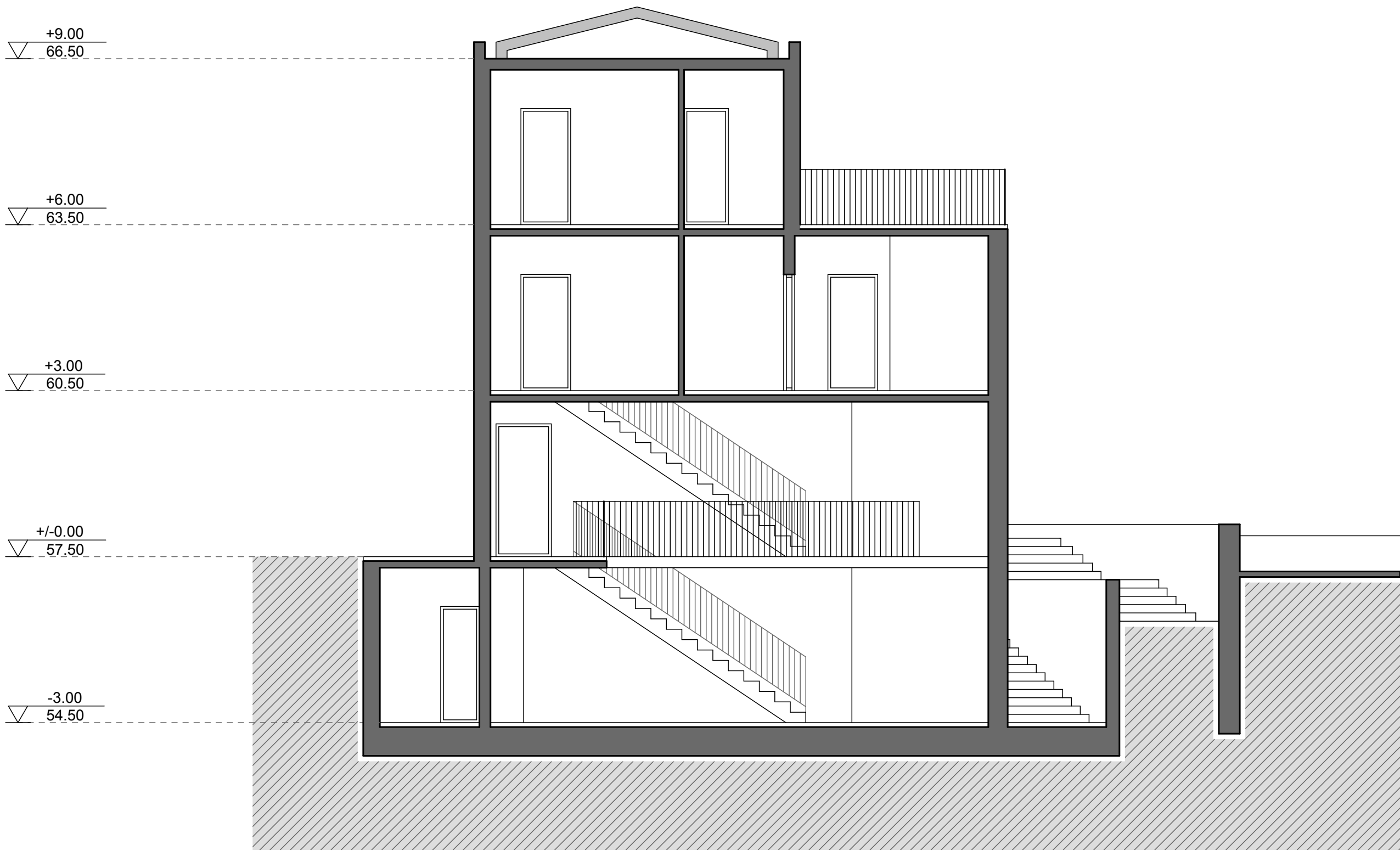
A circular diagram with a shaded sector. The label 'Z' is placed to the left of the circle.

NETO POVRŠINA DRUGOG SPRATA 35m2
BRUTO POVRŠINA DRUGOG SPRATA 41m2

OSNOVA KROVA R=1:100

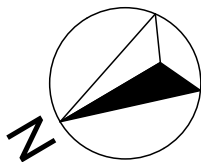


PRESJEK 1-1 R=1:75



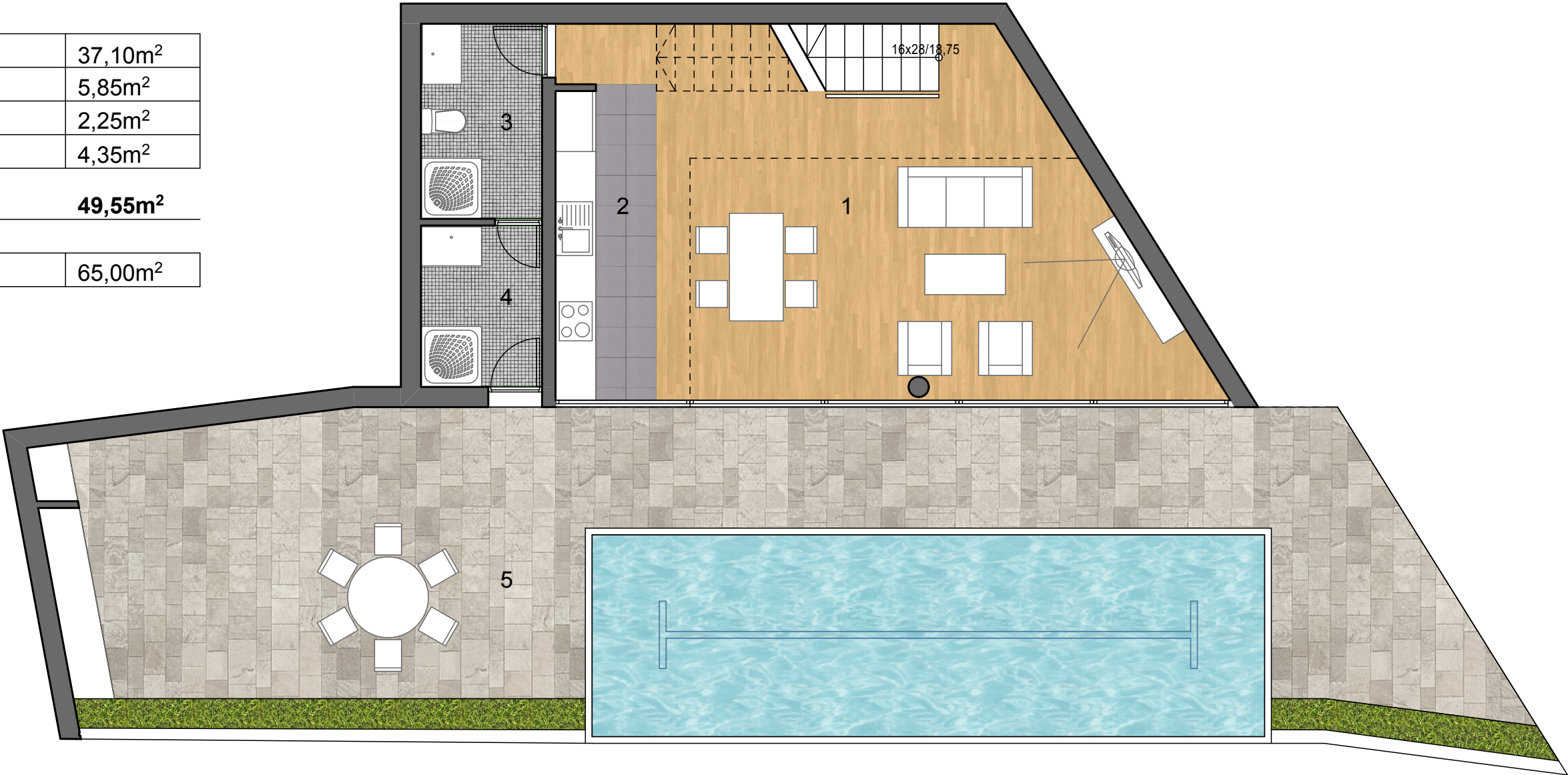
STAN 01 - suteren

1	dnevni boravak/ trpezarija	37,10m ²
2	kuhinja	5,85m ²
3	kupatilo	2,25m ²
4	kupatilo	4,35m ²
NETO korisna površina		49,55m ²
5	terasa	65,00m ²



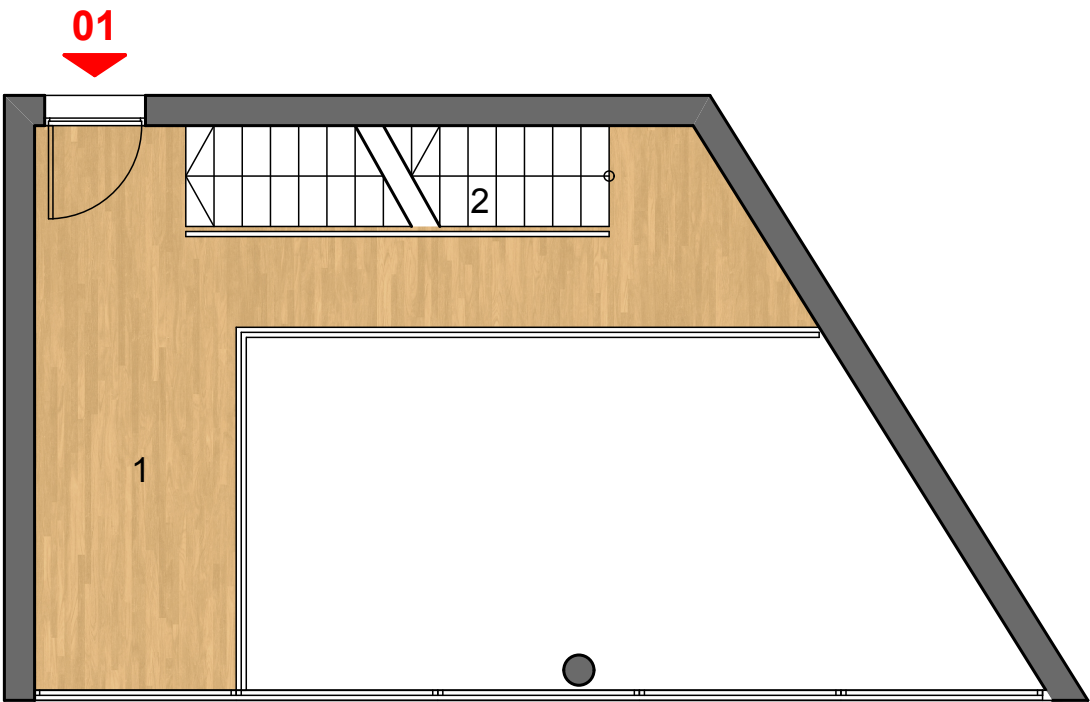
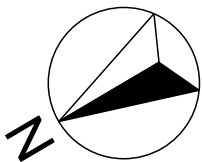
APARTAMENT 01 - subterain

1	living / dining room	37,10m ²
2	kitchen	5,85m ²
3	bathroom	2,25m ²
4	bathroom	4,35m ²
enclosed area		49,55m ²
7	terrace	65,00m ²



STAN 01 - prizemlje

1	ulazni hol	17,30m ²
2	stepenice	4,20m ²
NETO korisna površina		25,70m ²

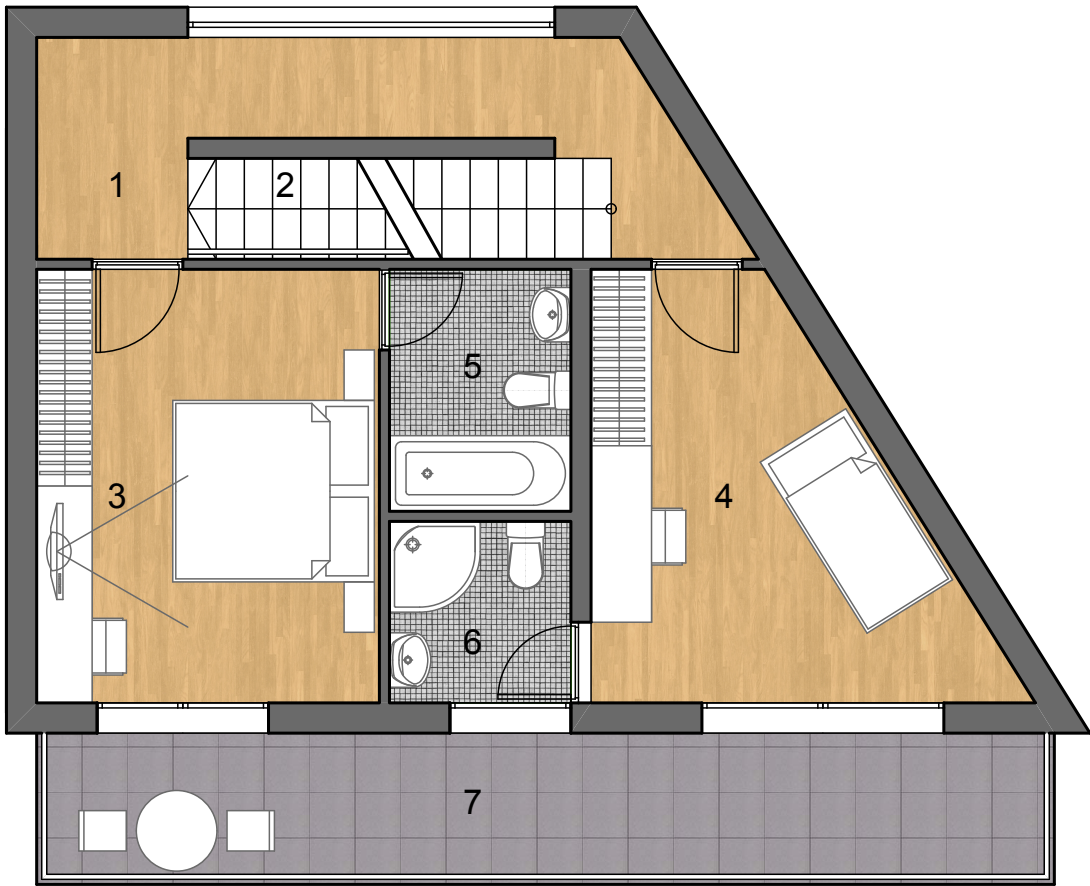
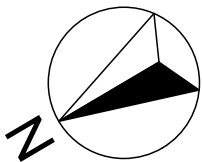


STAN 01 - ground floor

1	entrance hall	17,30m ²
2	stairs	4,20m ²
enclosed area		25,70m ²

STAN 01 - prvi sprat

1	hodnik	9,30m ²
2	stepenice	4,20m ²
3	spavaća soba	14,60m ²
4	spavaća soba	13,15m ²
5	kupatilo	4,35m ²
6	kupatilo	3,25m ²
NETO korisna površina		48,85m ²



APARTAMENT 01 - first floor

1	hallway	9,30m ²
2	stairs	4,20m ²
3	bedroom	14,60m ²
4	bedroom	13,15m ²
5	bathroom	4,35m ²
6	bathroom	3,25m ²
enclosed area		48,85m ²

7	terrace	15,15m ²
---	---------	---------------------

STAN 01 - drugi sprat

1	hodnik	9,30m ²
2	stepenice	4,20m ²
3	spavaća soba	14,60m ²
4	garderoba	3,60m ²
5	kupatilo	3,95m ²

NETO korisna površina 35,65m²

6	terase	21,85m ²
---	--------	---------------------

APARTAMENT 01 - second floor

1	hallway	9,30m ²
2	stairs	4,20m ²
3	bedroom	14,60m ²
4	bedroom	3,60m ²
5	bathroom	3,95m ²

enclosed area 35,65m²

6	terraces	21,85m ²
---	----------	---------------------

